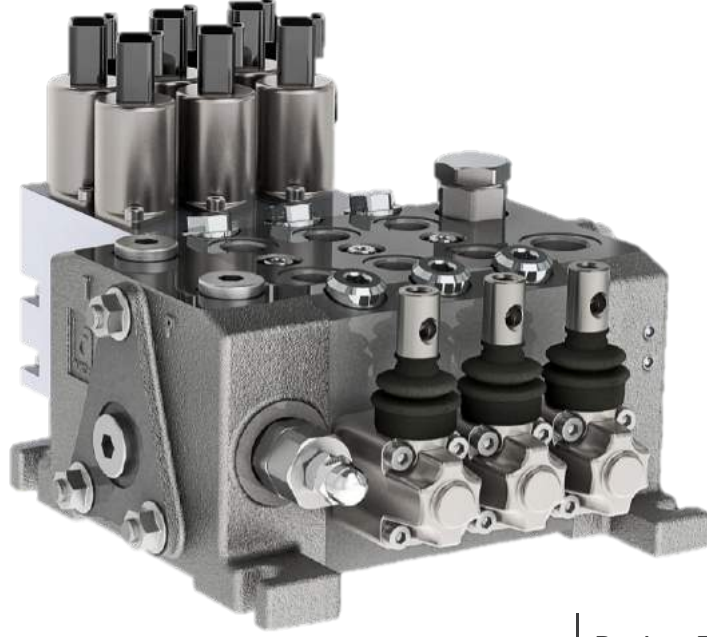


S50

sectional directional control valve
dilimli hidrolik yön kontrol valfi



Index - İçindekiler

Product Features
Ürün Özellikleri

General Specifications
Genel Özellikler

Order Coding
Sipariş Kodlama

Dimensional Data
Ölçüsel Bilgi

Performance Data
Performans Eğrileri

Hydraulic Specification
Hidrolik Devre

Inlet Options
Basınç (P) Hattı Opsiyonları

Working Section
Dilim

Spool Positioners
Sürgü Kontroller

Spool Options
Sürgü Tipleri

Auxiliary Valves
Yardımcı Valfler

Lever Types
Sap Tipleri

Outlet Options
Tank (T) Hattı Opsiyonları

General Specifications

Genel Özellikler

Product Features

S50 is compact and symmetric open center directional control valve with 1-10 sections in 3/8" BSP threads. Having nominal flow of 50 l/min and maximum operating pressure 315 bar.

Accessories

Valve is equipped with an adjustable main relief valve
Available in parallel (in standard), series, tandem circuit
Load Hold Check valves in each section
Auxiliary Valves
Wide range of spool options
Interchangeable Ø13 mm Spools
Carry-over and closed center option
Load Sense Option

Controls

Manual, Pneumatic, Electro-Pneumatic, Hydraulic, Electro-Hydraulic, Inlet proportional, Electro-Hydraulic Proportional, Mechanical Joystick and Remote Cable Control

Özellikler

S50 Serisi, 50lt/dk ve 315 bar çalışma basıncına kadar maksimum performansı gösteren açık merkez kontrol kumandasıdır.

Aksesuarlar

Ayarlanabilir Ana Emniyet Valfi
Paralel, Seri, Tandem Devre İmkanı
Her Dilimde Yük Tutma Valfleri
Yardımcı Valfler
Çeşitli Sürgü Tipleri
Değiştirilebilir Ø13 mm Sürgüler
Carry-over ve Kapalı Merkez İmkanı
LS Opsiyonu

Kontrol

Manuel, Pnömatik, Elektro-Pnömatik, Hidrolik, Elektro-Hidrolik, Elektro-Hidrolik Oransal, Giriş Oransal, Mekanik Joystick, Halat Kontrol

Standard Material Specifications Standard Malzeme Özellikleri

High Resistance Cast Iron Body *Döküm Gövde*
Hard Chromium Plated Interchangeable Spools *Sertleştirilmiş Krom Kaplama Sürgüler*
Steel spring caps *Çelik Yay Kapakları*
Aluminium Lever Caps *Alüminyum Sap Kapakları*
NBR Seals *NBR Sızdırmazlık Elemanları*

Working Conditions Çalışma Şartları

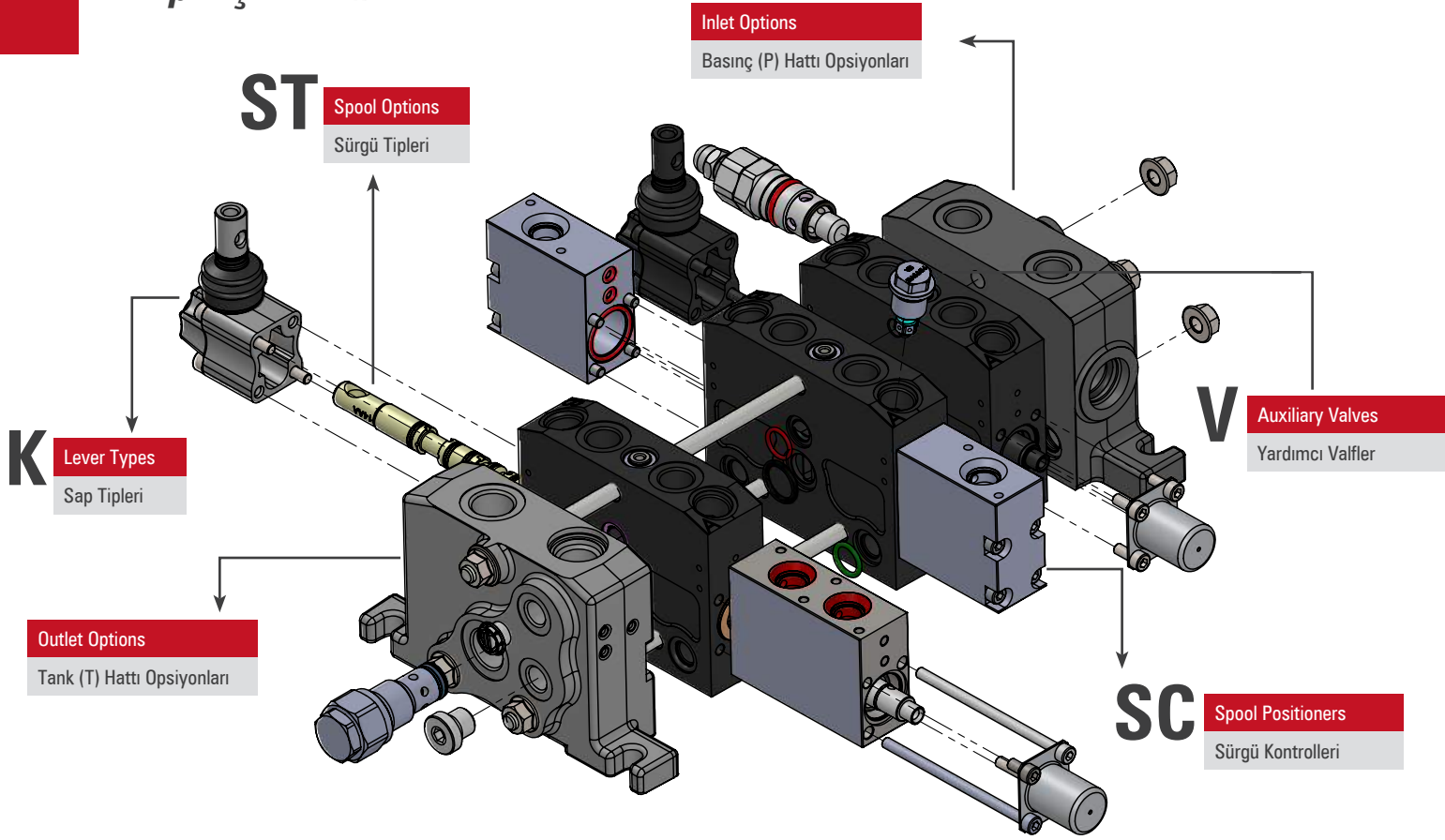
Recommended Oil Viscosity Range <i>Önerilen Yağ Viskozite Aralığı</i>	10 cSt to 75 cSt
Recommended Oil Filtering <i>Önerilen Yağ Filtrasyonu</i>	β 10 ≥ 75
Recommended Fluid Temperature Range <i>Önerilen Çalışma Sıcaklığı (°C)</i>	-20 to +80
Environmental Temperature Range <i>Önerilen Ortam Sıcaklığı (°C)</i>	-35 to +60
Maximum Contamination Level <i>Maksimum Kirlilik Seviyesi</i>	Class 10 (NAS 1638) 19/16 (ISO 4406)

Technical Specifications Teknik Özellikler

Nominal Flow <i>Debi</i>	50 lpm	13 US gpm
Number of Spools <i>Dilim Sayısı</i>	1 - 9	
Maximum Working Pressure <i>Maksimum Çalışma Basıncı</i>	315 bar 250 bar in Series Circuit	4650 psi 3600 psi in Series Circuit
Maximum Back Pressure <i>Maksimum Tank Hattı Basıncı</i>	30 bar	430 psi
Internal Leakage <i>İç Kaçak Değeri</i>	4 cc - 9 cc (100 Bar; 32 cSt, 40 °C)	0,24 - 0,54 in ³ /m (1450 psi; 32 cSt, 104°F)

Order Coding

Sipariş Kodlama



S52 - IL-005(180)-B01 / - A SC1 ST11 V13 K1 / A SC15 ST1 V13 / B - H

1

2

3

4

1

Valve Type Valf Tipi

S50 Valve Series Valf Serisi
2 Number of Spools Sürgü Sayısı

2

Inlet Options Pompa (P) Hattı Opsiyonları

IL Side of Inlet Section Basınç Kapağı Yönü
005 Configuration of Inlet Section Basınç Kapağı Konfigürasyonu
180 Pressure Setting Basınç Değeri
B01 Inlet Position and Port Thread Basınç Kapağı Konfigürasyonu

3

Working Section Dilim

A Port Thread Port ölçüleri
SC1 Spool Positioners Sürgü Kontrol
ST11 Spool Options Sürgü Tipleri
V13 Auxiliary Valves Yardımcı Valfler
K1 Lever Types Sap Tipleri

4

Outlet Options Tank (T) Hattı Opsiyonları

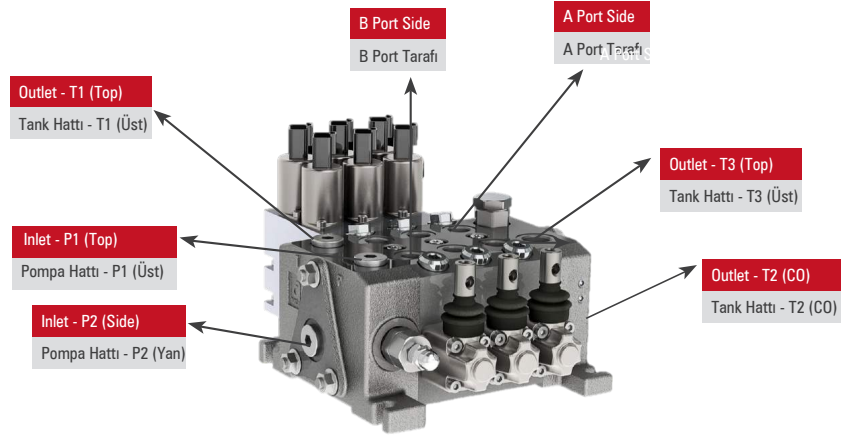
B Port Thread Port ölçüleri
H Outlet Options Tank Hattı Opsiyonları

This part must be coded separately for each working section. If adjacent sections are identical then code the first section and put number of identical sections with a cross.
Example for 3 identical sections; S4/IL-005(180)-B01/ASC1ST1V7(A160B160)K1/3XASC4ST1V13K3/B-H

Bu bölümdeki kodlama her dilim için ayrı ayrı yapılmalıdır. Eğer birbirini takip eden ve aynı konfigürasyona sahip dilim isteniyorsa, aynı dilimler, dilim sayısı başa getirilip yanına çarpı konacak şekilde kodlanabilir. Örnek Kodlama; S4/IL-005(180)-B01/ASC1ST1V7(A160B160)K1/3XASC4ST1V13K3/B-H

Dimensional Data

Ölçüsel Bilgi

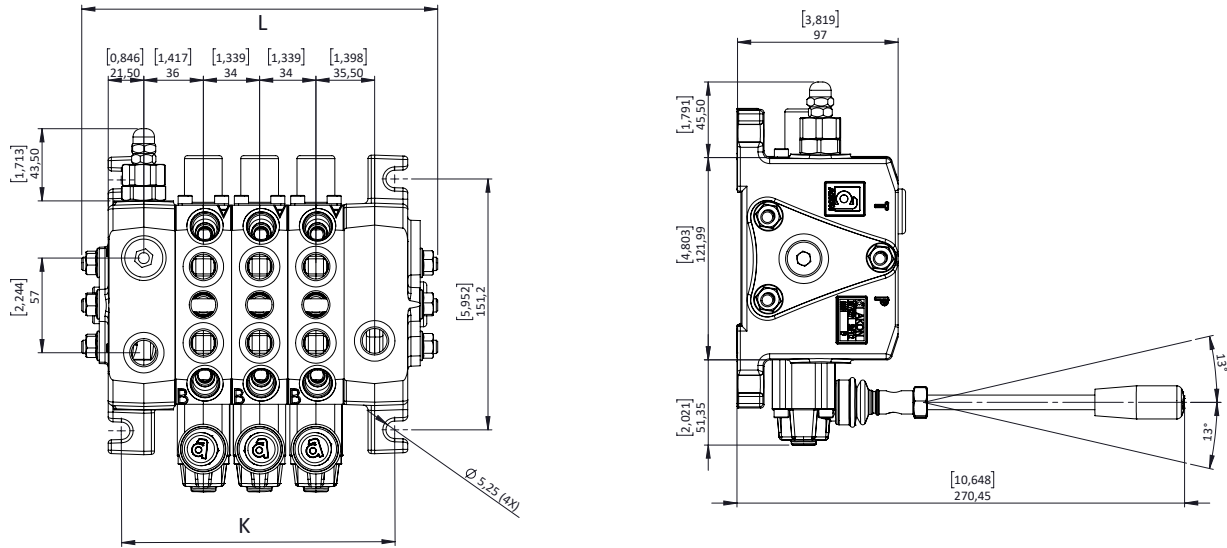


Standard & Optional Threads Standart ve Opsiyonel Ölçüler

Thread Paso Tipi	Code Kod	P1 - P2 - T1	A/B	T3	T2(CO)
BSP(Standard)	A	G 1/2"	G 3/8"	G 1/2"	G 1/2"
UN-UNF	L	3/4 - 16 (SAE 8)	3/4 - 16 (SAE 8)	7/8 - 14 (SAE 10)	G 1/2"
	M	7/8 - 14 (SAE 10)	3/4 - 16 (SAE 8)	7/8 - 14 (SAE 10)	G 1/2"
METRIC	U	M22x1,5	M18x1,5	M22x1,5	G 1/2"

BSP threads are standard threads. Its necessary to code the port thread in inlet, working and outlet section. Example coding; S1/IL-005(180)-B01/ASC1ST1V13/B-H

Valflerimiz standart olarak BSP Diş üretilmektedir. Talep edilen port ölçüleri basınç kapağında, her dilimin başında ve dönüş kapağında kodlanır. Örnek Kodlama; S1/IL-005(180)-B01/ASC1ST1V13/B-H



Dimensions & Weight Ölçüler ve Ağırlık

Type / Tip	K		L		Weight Ağırlık	
	mm	inc	mm	inc	kg	lb
S51	96,7	3.81	147	5.79	8.92	19.66
S52	130,7	5.14	181	7.12	11.11	24.49
S53	164,7	6.48	215	8.46	13.30	29.32
S54	199,7	7.84	249	9.80	15.50	34.17
S55	233,7	9.18	283	11.14	17.70	39.02
S56	267,7	10.52	317	12.48	19.80	43.85
S57	301,7	11.87	351	13.82	22.08	48.68
S58	335,7	13.13	385	15.16	24.27	53.51
S59	369,7	14.55	419	16.50	26.46	58.33

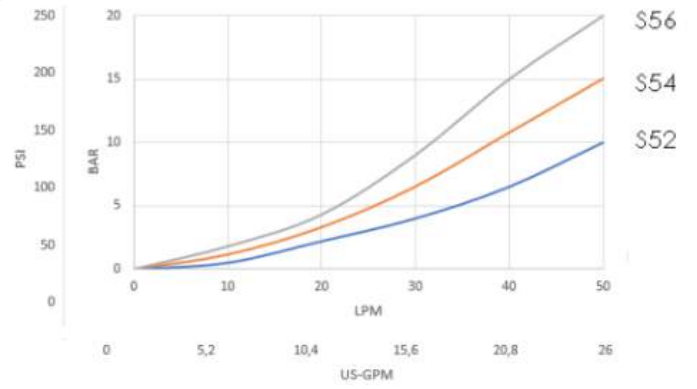
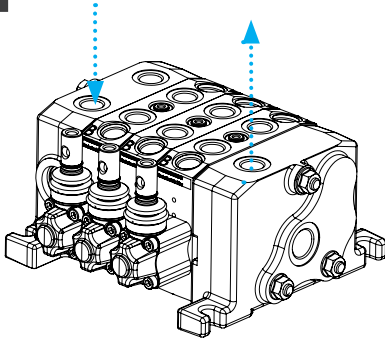
Given weights are for standard configurations.
Ağırlıklar standart konfigürasyon için verilmiştir.

Performance Data

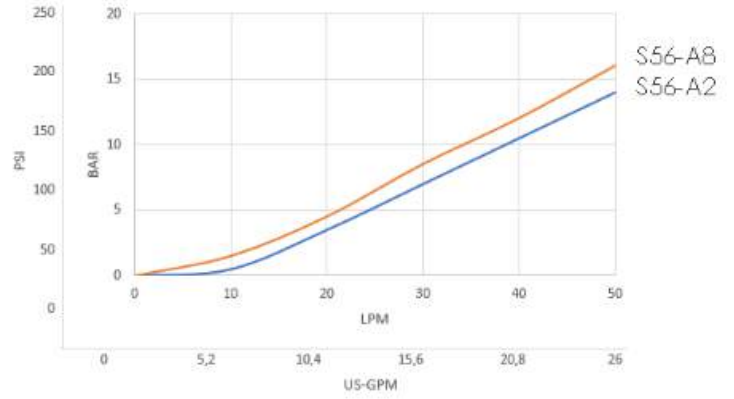
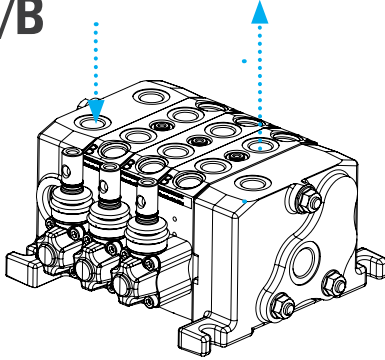
Performans Eğrileri

Pressure Drop Curves Basınç Kayıp Eğrileri

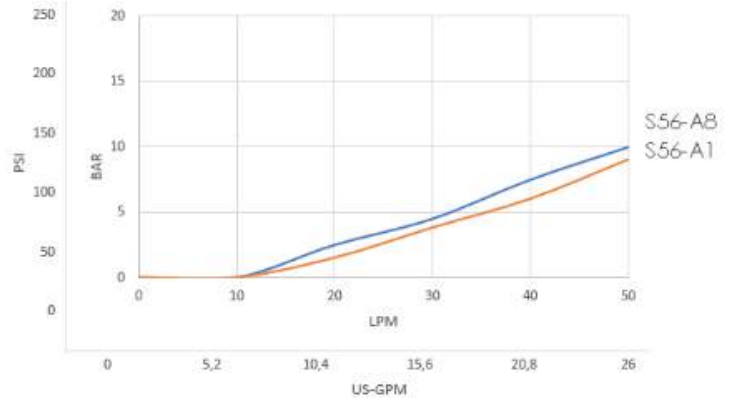
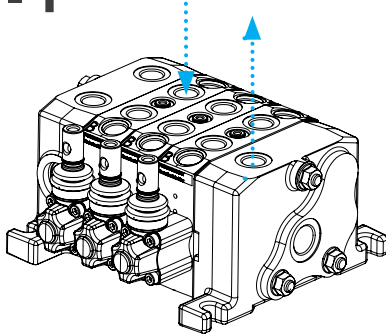
P - T



P - A/B



A/B - T



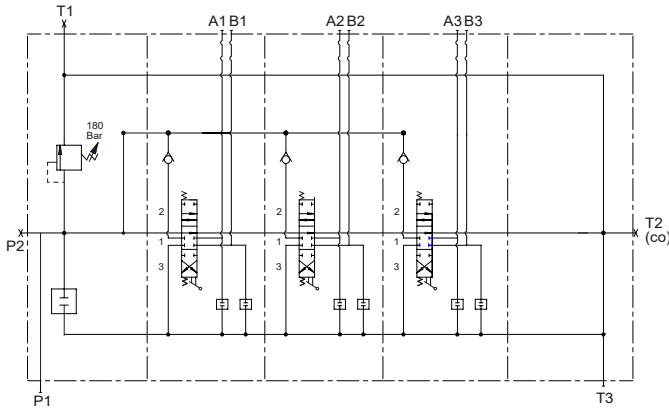
Measured with spool type ST1 and 32 cSt hydraulic oil @ 40°C.
ST1 sürgü ve 32 cSt hidrolik yağ ile 40°C'de ölçülmüştür.

Hydraulic Specifications

Hidrolik Devre

Parallel Circuit Paralel Devre

Standard configuration; Parallel circuit with upper inlet and outlet.
Standart konfigürasyon; Paralel devre, P1 ve T3 açık, P2, T1 ve T(CO) kör şeklindedir.

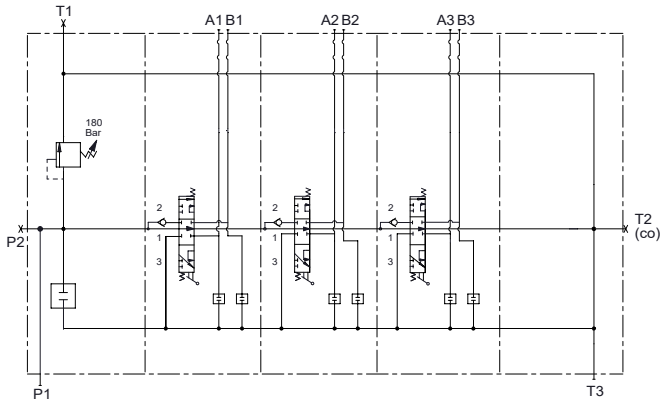


Code / Kod

**NO
CODE**

Parallel circuit is standard configuration.
No need for coding.
Standart üretimimiz paralel devredir.
Ek bir kodlamaya gerek yoktur.

Series Circuit Seri Devre



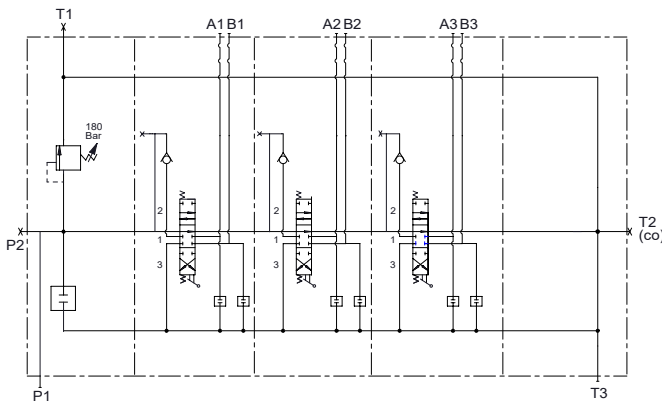
Code / Kod

S

Maximum working pressure is 250 bar.
Maksimum çalışma basıncı 250 bar.

Series Circuit is coded with «S» before each series working section demanded.
Example Coding; S52/IL-005(180)-B01/ SASC1ST1V13/SASC1ST1V13/B
Seri devre her seri dilimin önüne «S» gelecek şekilde kodlanır.
Örnek Kodlama; S52/IL-005(180)-B01/ SASC1ST1V13/SASC1ST1V13/B

Tandem Circuit Tandem Devre



Code / Kod

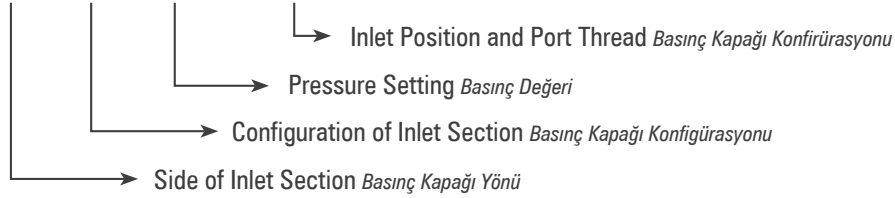
T

Tandem Circuit is coded with «T» before each series working section demanded.
Example Coding; S52/IL-005(180)-B01/ TASC1ST1V13/TASC1ST1V13/B
Seri devre her seri dilimin önüne «T» gelecek şekilde kodlanır.
Örnek Kodlama; S52/IL-005(180)-B01/ TASC1ST1V13/TASC1ST1V13/B

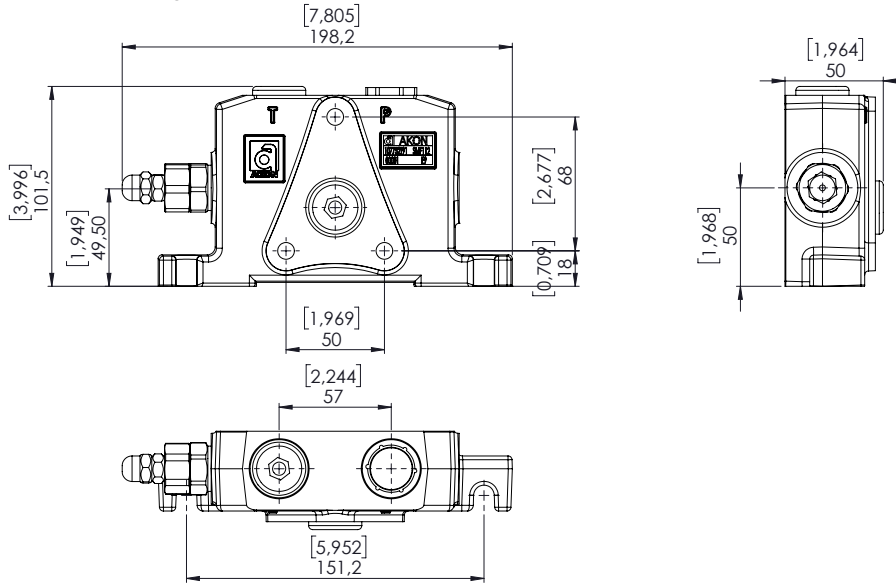
Inlet Option

Basınç (P) Hattı Opsiyonları

S51 / IL- 005 (180) - B01 / A SC4 ST11 V13 K3 / B

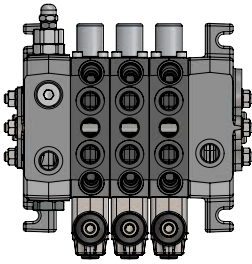


Inlet Cover *Basınç Kapağı*



Side of Inlet Section *Basınç Kapağı Yönü*

Valve with left inlet *Sol Basınç Kapağı*

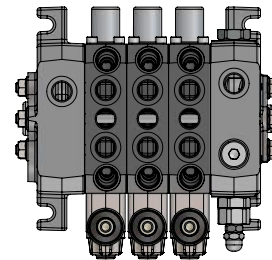


Code / Kod

IL

Example coding *Örnek kodlama*
S51 / IL- 003 (180) - B01

Valve with right inlet *Sağ Basınç Kapağı*

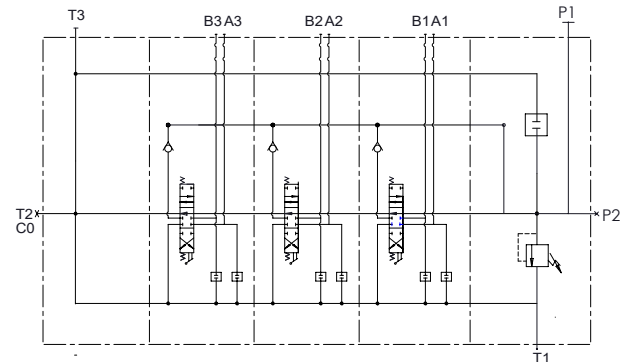
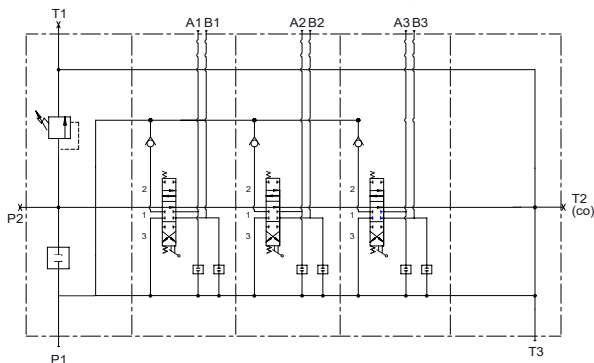


Code / Kod

IR

Example coding *Örnek kodlama*
S51 / IR- 005 (180) - B01

Left inlet is standard onfiguration unless otherwise indicated.
Aksi belirtilmezse S50 serisi valfler sol basınç kapağı ile üretilir.



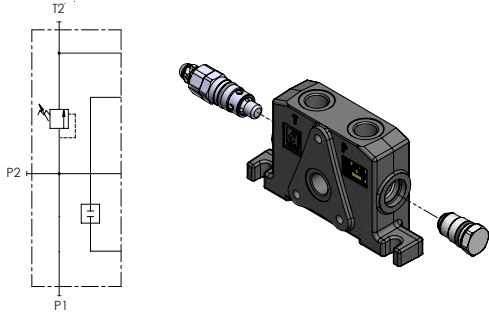
Configuration of Inlet Section

Basınç Kapağı Konfigürasyonu

003

A Side Direct Acting Main Relief Valve,
B Main Relief Valve Blanking Plug

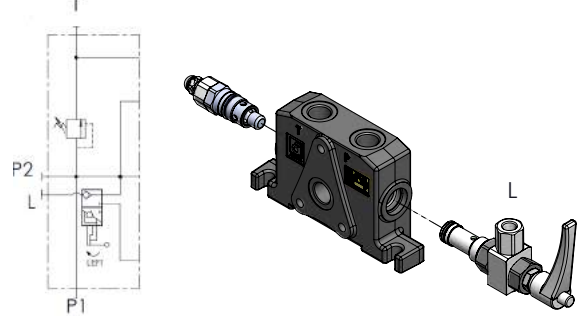
A Tarafı Regülatör, B Kör Regülatör



004

A Side Direct Acting Main Relief Valve,
B Side Hydraulic Lock or Brake Valve

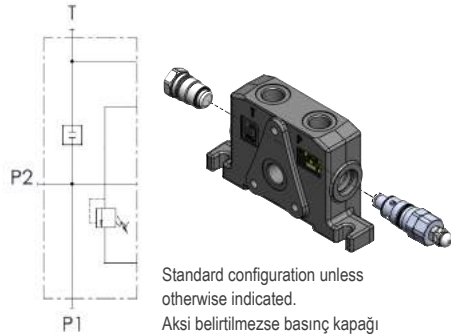
A Tarafı Regülatör, B Tarafı Kilit Valfi



005

A Side Main Relief Valve Blanking Plug,
B Side Direct Acting Main Relief Valve

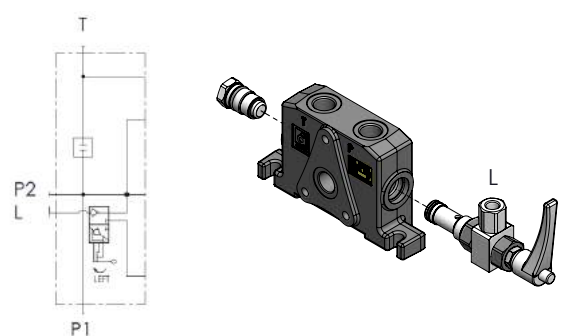
A Tarafı Kör Regülatör, B Tarafı Regülatör



006

A Side Main Relief Valve Blanking Plug,
B Side Hydraulic Lock or Brake Valve

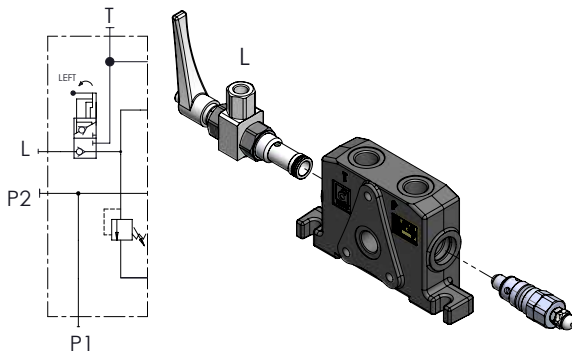
A Tarafı Kör Regülatör, B Tarafı Kilit Valfi



007

A Side Hydraulic Lock or Brake Valve
B Side Direct Acting Main Relief Valve

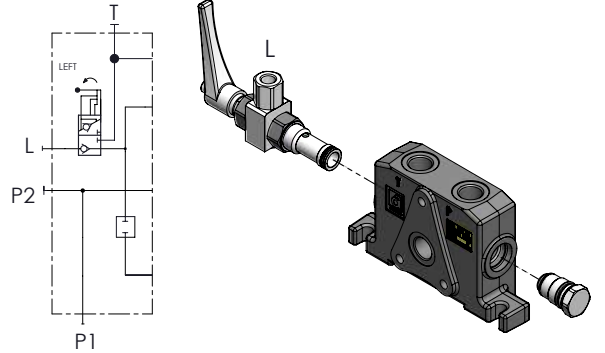
A Tarafı Kilit Valfi, B Tarafı Regülatör



008

A Side Hydraulic Lock or Brake Valve
B Side Main Relief Valve Blanking Plug

A Tarafı Kilit Valfi, B Tarafı Kör Regülatör



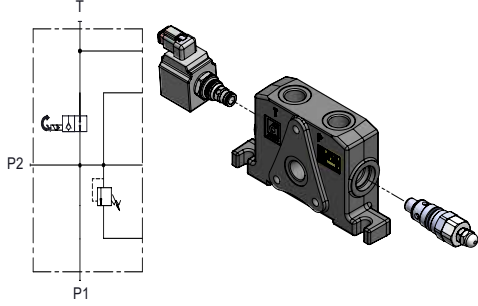
Configuration of Inlet Section

Basınç Kapağı Konfigürasyonu

009

A Side Unloading Valve
B Side Direct Acting Main Relief Valve

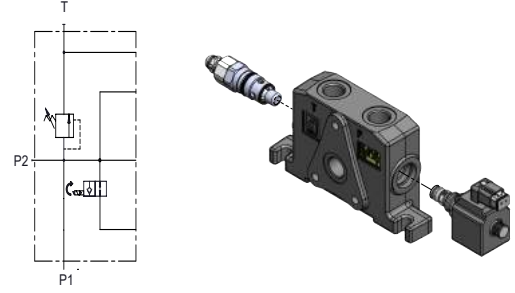
A Tarafı Unloading, B Tarafı Regülatör



010

A Side Direct Acting Main Relief Valve,
B Side Unloading Valve

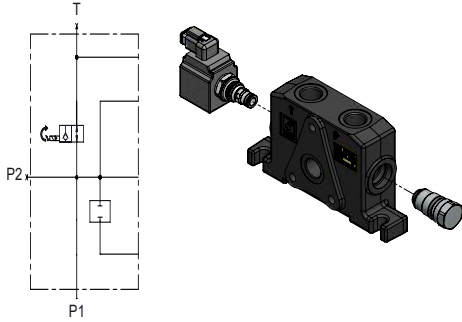
A Tarafı Regülatör, B Tarafı Unloading



011

A Side Unloading Valve
B Side Main Relief Valve Blanking Plug

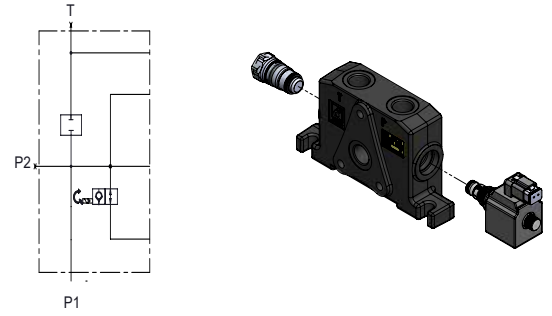
A Tarafı Unloading, B Tarafı Kör Regülatör



012

A Side Main Relief Valve Blanking Plug,
B Side Unloading Valve

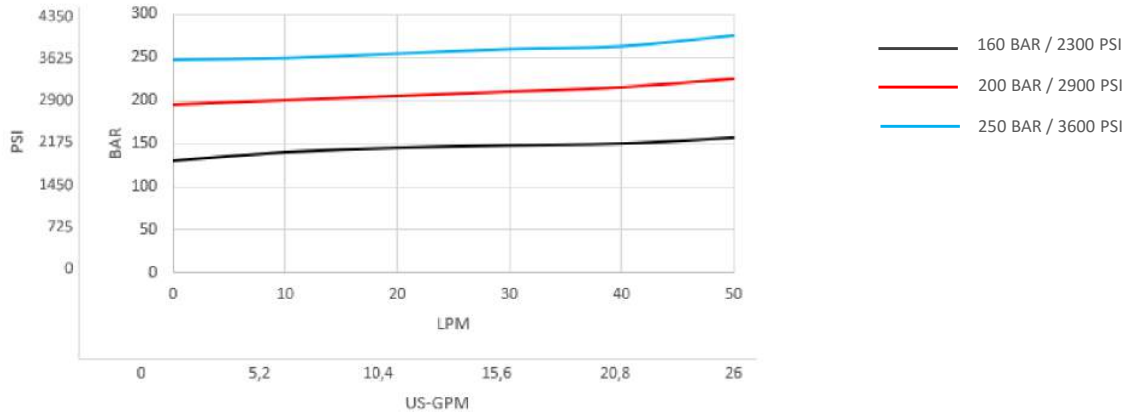
A Tarafı Kör Regülatör, B Tarafı Unloading



Inlet Position and Thread Type *Basınç Kapağı Konfigürasyonu*

Code <i>Kod</i>	Port Threads <i>Paso Tipi</i> P1, P2, T3	Connection Port <i>Bağlantı Portu</i>	Steel Plug <i>Kör Tapa</i>	Load Sense Connection <i>Load Sense Bağlantısı</i>
B01	G 1/2"	P1	P2, T1	-
B02	G 1/2"	P1	T1	LS(G 1/4")
B03	G 1/2"	P2	P1, T1	-

Main Relief Valve Performance Data *Ana Emniyet Valfi Performans Eğrisi*

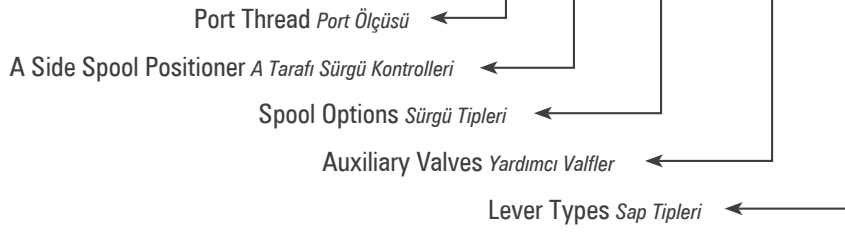


Measured with 32 cSt hydraulic oil @ 40°C and neglected tank line pressure.
32 cSt hidrolik yağ ile 40°C'de, tank hattı basıncı ihmal edilerek ölçülmüştür.

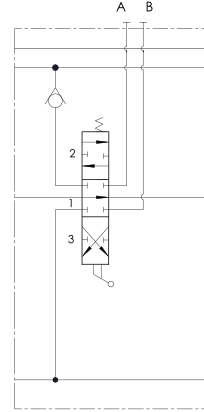
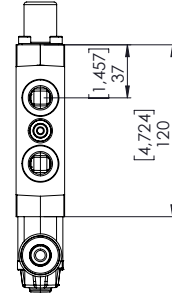
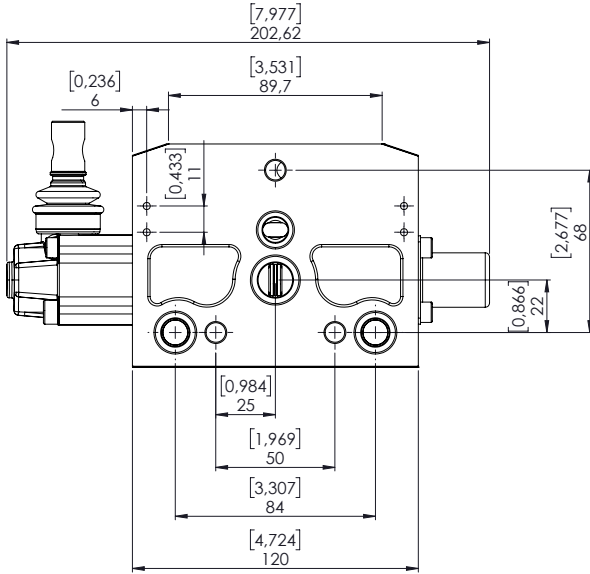
Working Section

Dilim

S51 / IL- 005 (180) - B01 / A SC4 ST11 V13 K3 / B

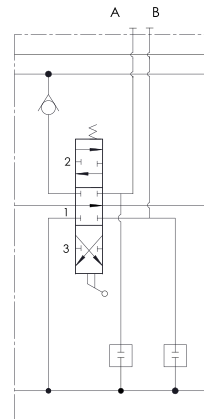
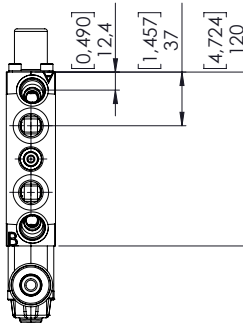
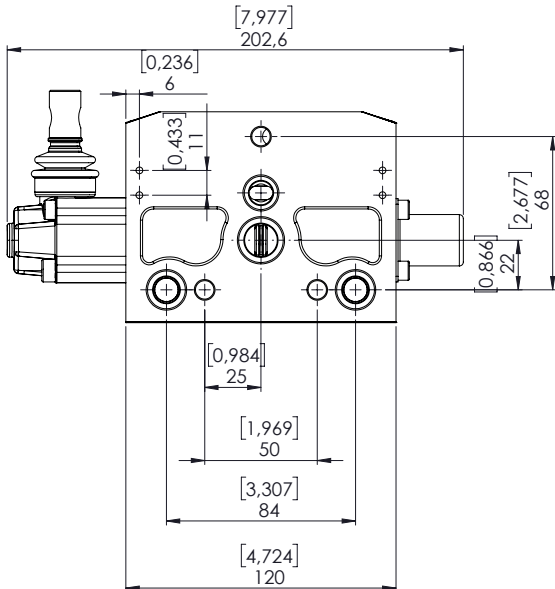


Working section without port relief cavity *Standart Dilim*



Hydraulic Circuit
Hidrolik Devre

Working section with port relief cavity *Antişok portları işlenmiş dilim*



Hydraulic Circuit
Hidrolik Devre

Spool Positioners

Sürgü Kontrolleri

S51 / IL- 005 (180) - B01 / A **SC4** ST11 V13 K3 / B

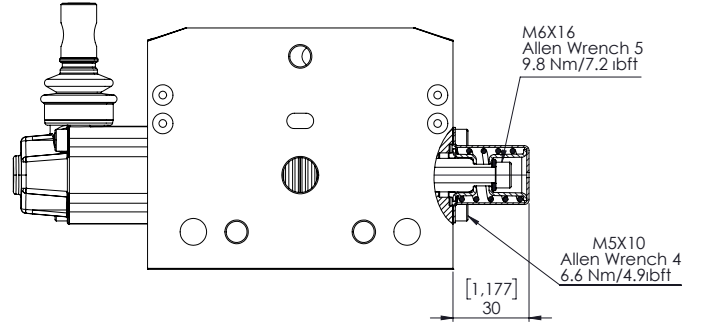
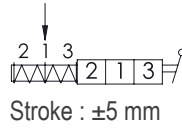
↳ Spool Positioners Sürgü Kontrolleri

Spool Positioners with Spring Return *Yay Dönüslü Sürgü Kontrolleri*

SC1

3 Positions Spring Return

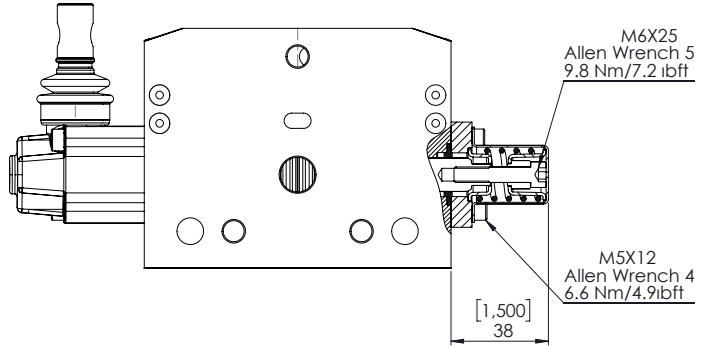
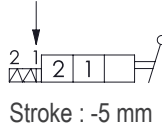
3 Pozisyon Yaylı



SC5

2 Positions Spring Return

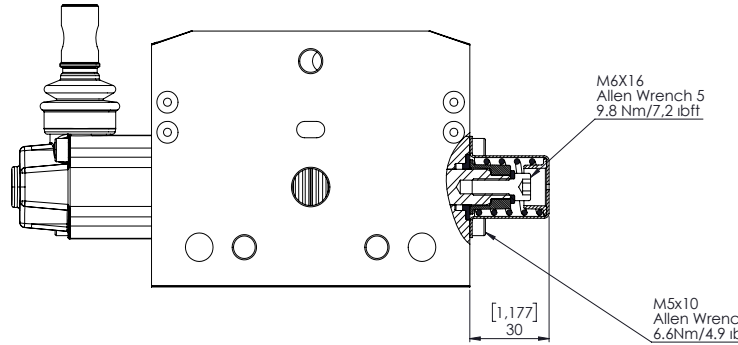
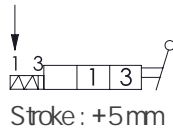
2 Pozisyon Yaylı



SC6

2 Positions Spring Return

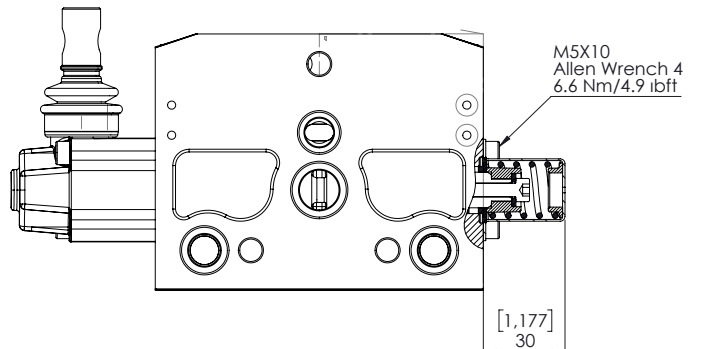
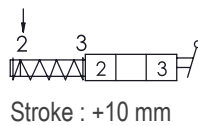
2 Pozisyon Yaylı



SC11

2 Positions Spring Return in 3rd Position

2 Pozisyon, 3. Pozisyona Yaylı



Spool Positioners

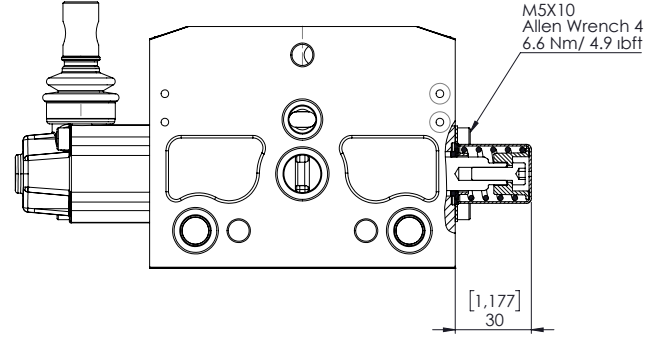
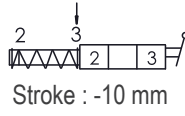
Sürgü Kontrolleri

Spool Positioners with Spring Return *Yay Dönüslü Sürgü Kontrolleri*

SC12

2 Positions Spring Return in 2nd Position

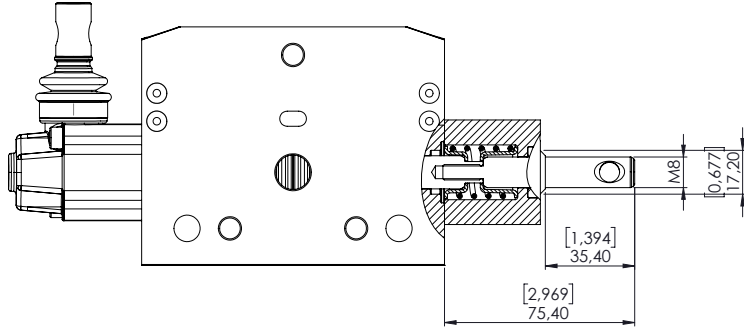
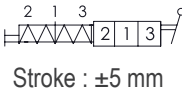
2 Pozisyon, 2. Pozisyona Yaylı



SC25

3 Position Spring Return with male M8 pin extension for dual control

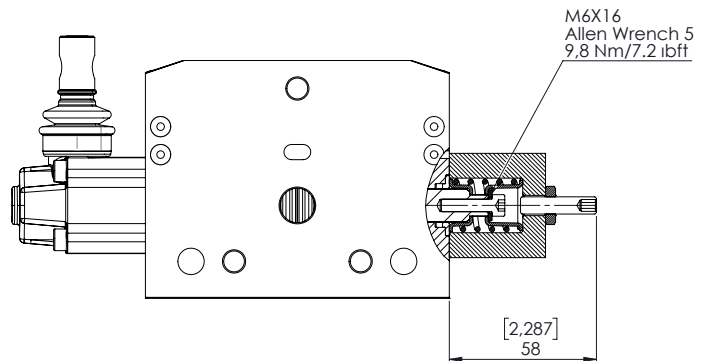
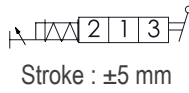
3 Pozisyon Yaylı, M8 Erkek Uzatmalı



SC33

2 Positions Spring Return in 2nd Position

2 Pozisyon, 2. Pozisyona Yaylı



Spool Positioners

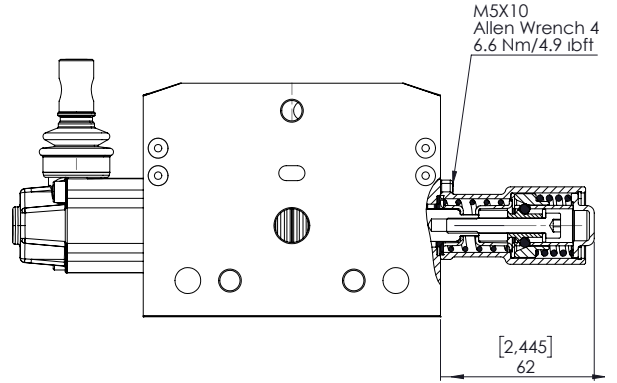
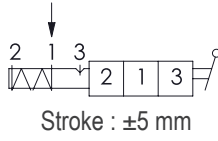
Sürgü Kontrolleri

Spool Positioners with Detent *Detantlı Sürgü Kontrolleri*

SC2

3 Position Spring Return,
Detent in Pos. 3

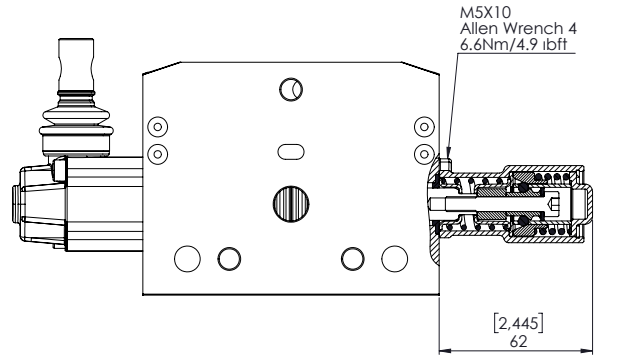
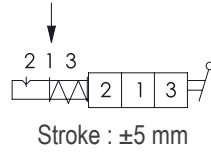
3 Pozisyon Yaylı, 3.Pozisyon
Detantlı



SC3

3 Position Spring Return,
Detent in Pos. 2

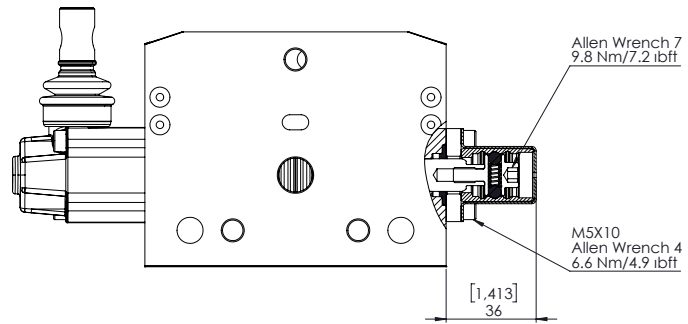
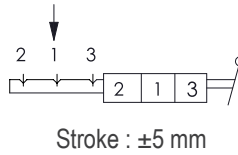
3 Pozisyon Yaylı, 2.Pozisyon
Detantlı



SC4

3 Position Detent in All
Positions

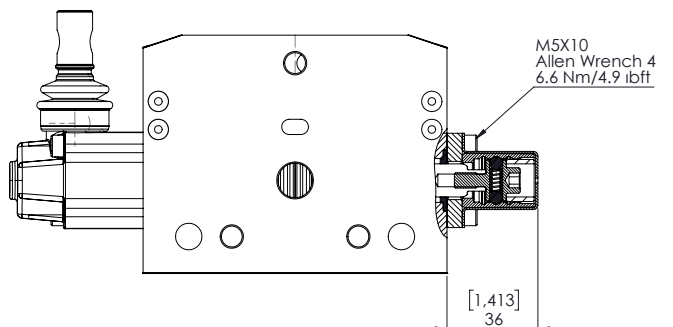
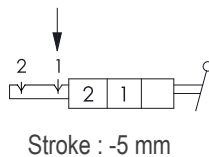
3Pozisyon Tümü Detantlı



SC7

2 Position Detent

2 Pozisyon, Detantlı



Spool Positioners

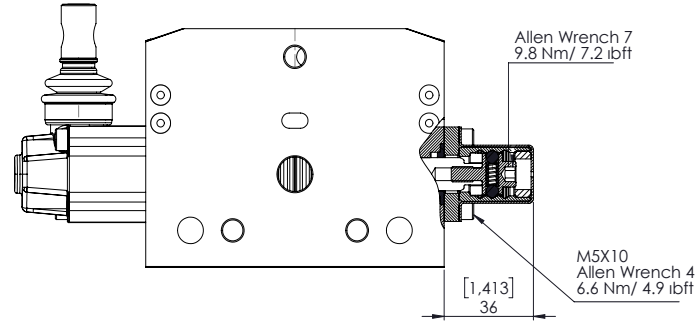
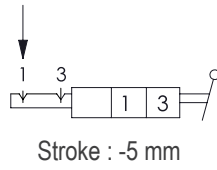
Sürgü Kontrolleri

Spool Positioners with Detent *Detantlı Sürgü Kontrolleri*

SC8

2 Position Detent
Detent in Pos. 1,3

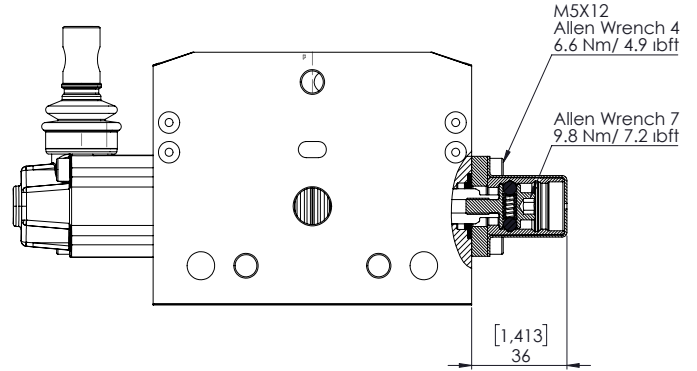
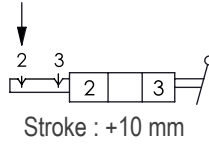
2 Pozisyon, Detantlı



SC13

2 Position Detent
Detent in Pos. 2,3

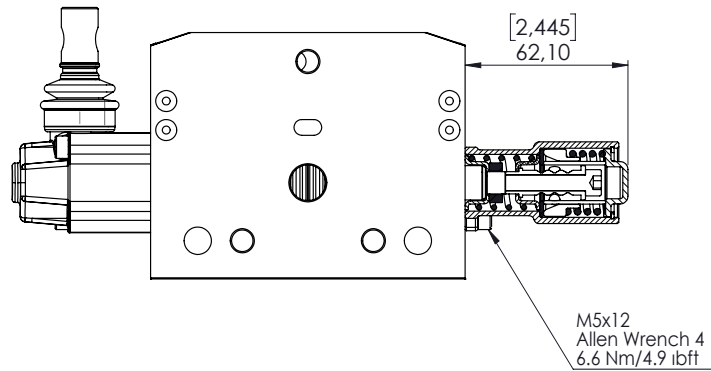
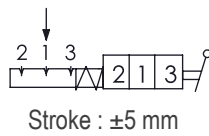
2 Pozisyon, Detantlı



SC28

3 Position Detent in All
Positions

3 Pozisyon Tümü Detantlı



Spool Positioners

Sürgü Kontrolleri

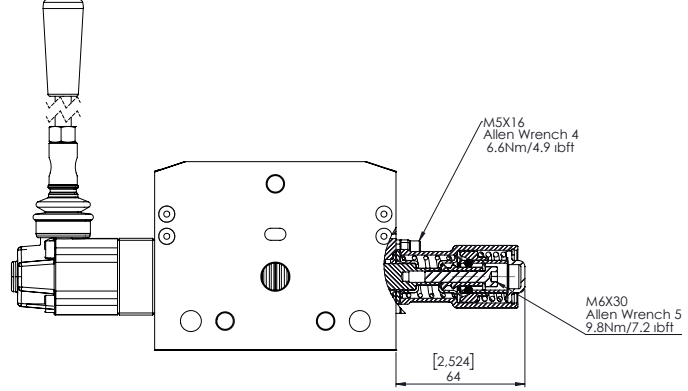
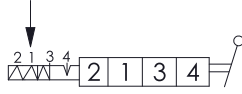
4 Position Spool Positioners 4 Pozisyon Sürgü Kontrolleri

SC9

4 Position Spring Return,
Detent in 4th Pos.

4 Pozisyon Yaylı, 4.Pozisyon
Detantlı

Used with Spool ST9B
ST9B Sürgü ile kullanılır

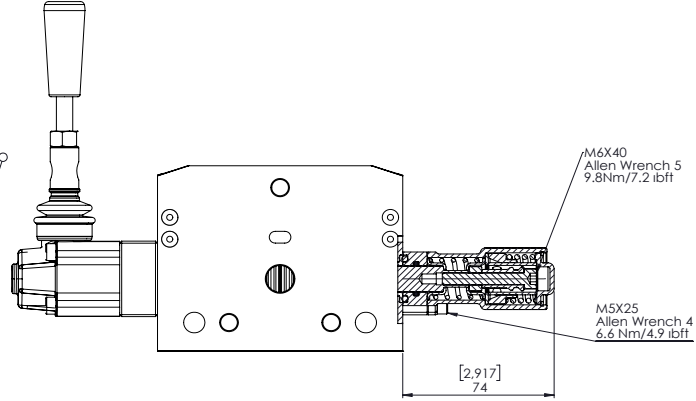
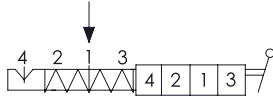


SC23

4 Position Spring Return,
Detent in 4th Pos.

4 Pozisyon Yaylı, 4.Pozisyon
Detantlı

Used with Spool ST9A
ST9A Sürgü ile kullanılır

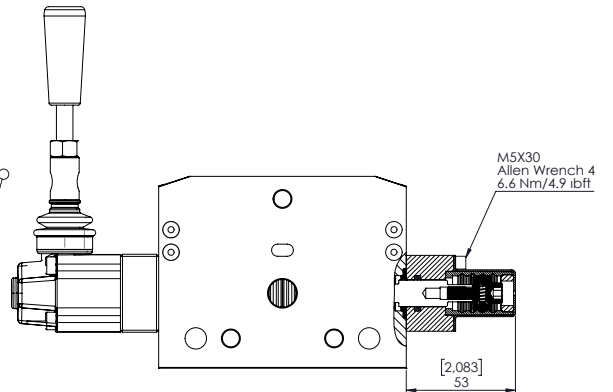
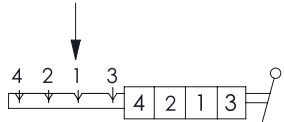


SC10

4 Position Detent in All
Positions

4 Pozisyon Tüm Pozisyonlar
Detantlı

Used with Spool ST9A
ST9A Sürgü ile kullanılır



Spool Positioners

Sürgü Kontrolleri

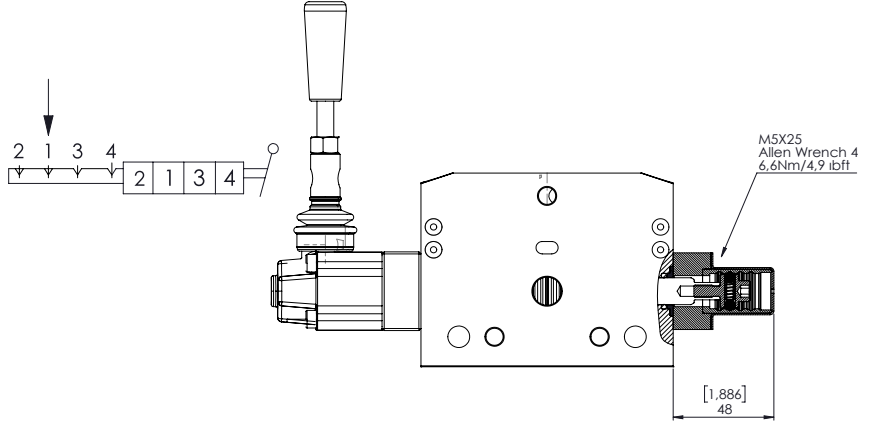
4 Position Spool Positioners 4 Pozisyon Sürgü Kontrolleri

SC24

4 Position Detent in All Positions

4 Pozisyon Tüm Pozisyonlar Detantlı

Used with Spool ST9B
ST9B Sürgü ile kullanılır

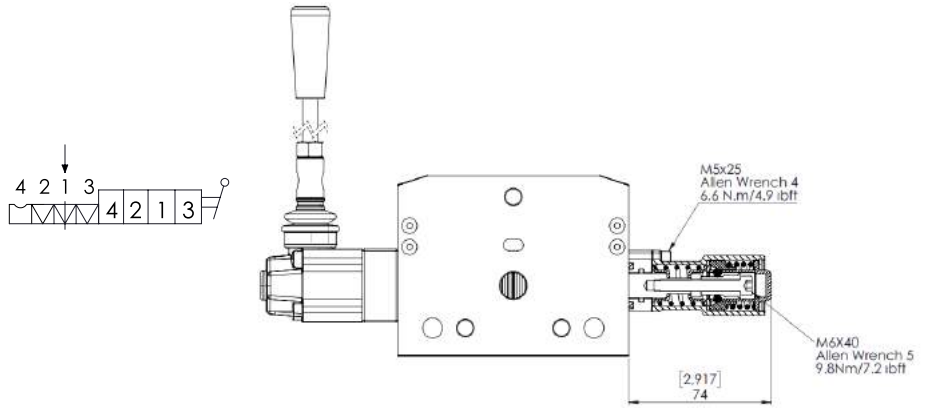


SC21

4 Position Spring Return, Feel Detent in 4th Pos.

4 Pozisyon Yaylı, 4. Pozisyon Hissetmeli Detantlı

Used with Spool ST10A
ST10A Sürgü ile kullanılır

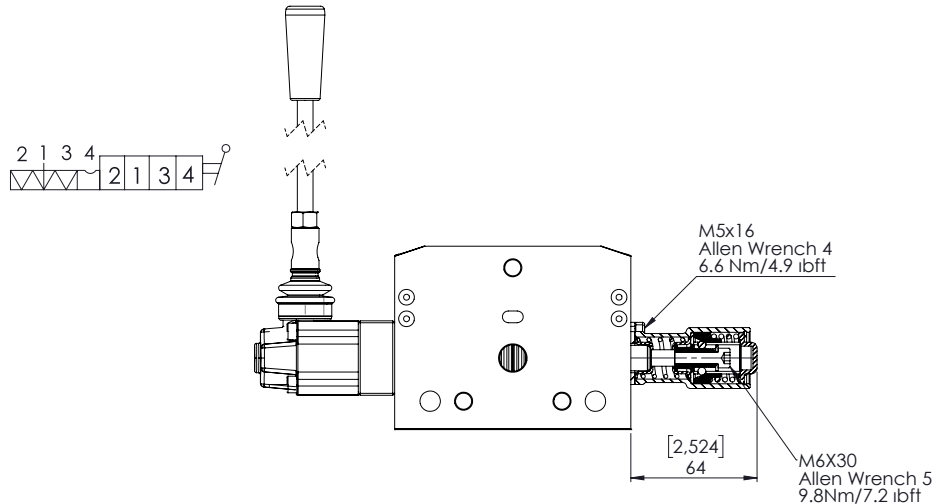


SC22

4 Position Spring Return, Feel Detent in 4th Pos.

4 Pozisyon Yaylı, 4. Pozisyon Hissetmeli Detantlı

Used with Spool ST10B
ST10B Sürgü ile kullanılır



Spool Positioners

Sürgü Kontrolleri

SC15

On-Off Pneumatic Control

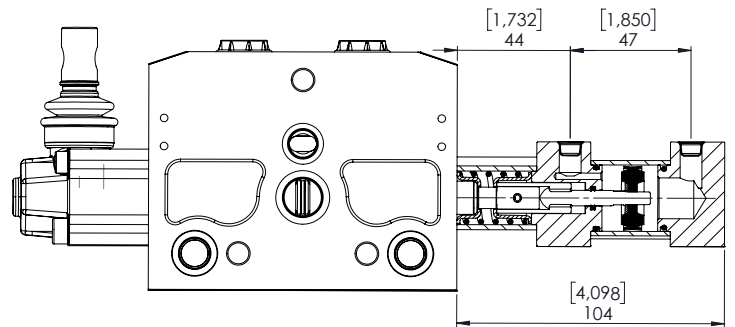
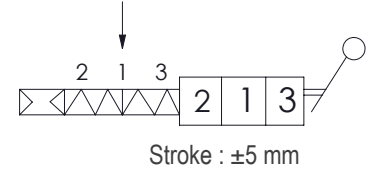
On-Off Pnömatik Kontrol

Pilot Pressure
Pilot Basıncı

Min. 6 Bar / 85 PSI
Max. 12 Bar / 170 PSI

Stroke (mm)
Strok (mm)

±5 mm



SC16

On-Off Hydraulic Control

On-Off Hidrolik Kontrol

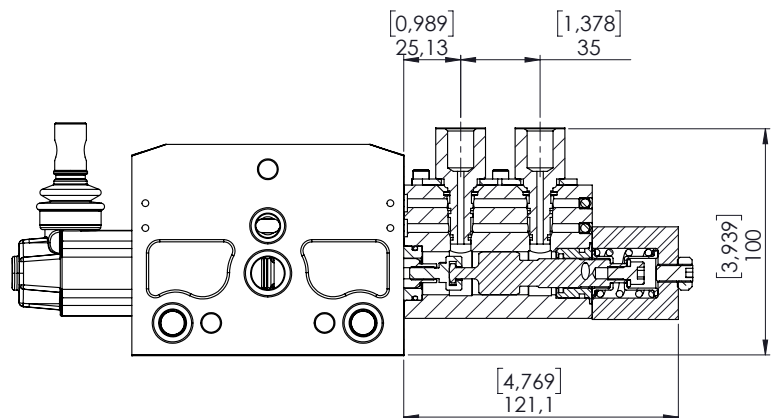
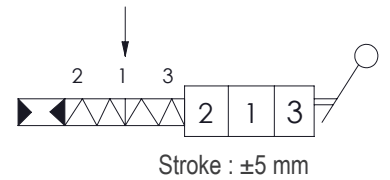
Operation Characteristics

Pilot Pressure
Pilot Basıncı

Min. 6 Bar / 85 PSI
Max. 50 Bar / 720 PSI

Stroke (mm)
Strok (mm)

±5 mm



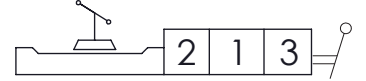
Spool Positioners

Sürgü Kontrolleri

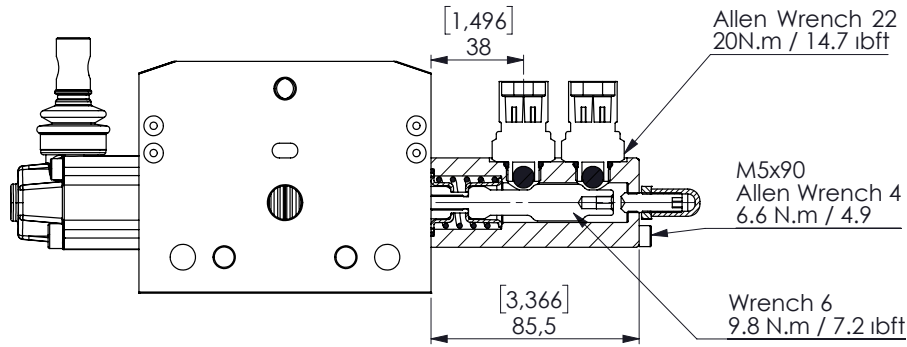
SC18

3 Positions, Microswitch Operation in both positions (NC)

3 Pozisyon, Çift Taraflı Mikrosviç Kontrol (NK)



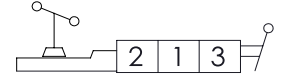
Stroke : ±5 mm



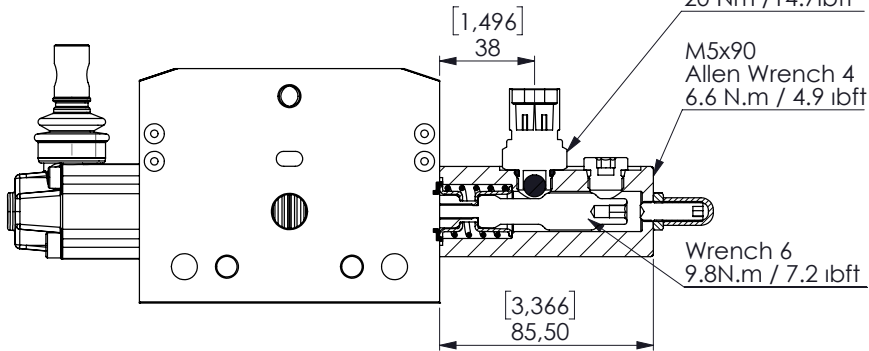
SC18A

3 Positions, Microswitch Operation in 3rd Position

3 Pozisyon, 3.Pozisyona Mikrosviç Kontrol



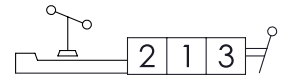
Stroke : ±5 mm



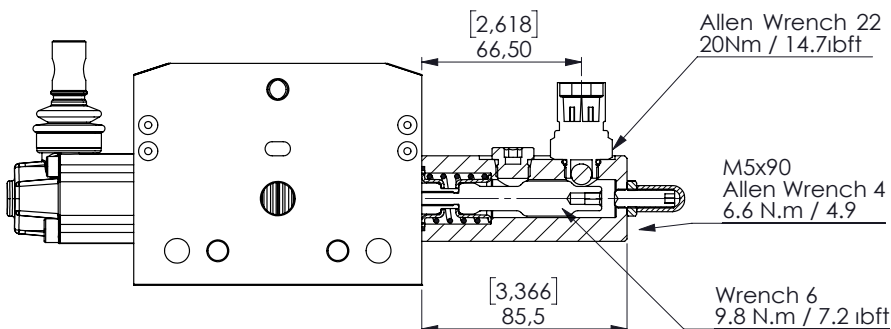
SC18B

3 Positions, Microswitch Operation in 2nd Position

3 Pozisyon, 2.Pozisyona Mikrosviç Kontrol



Stroke : ±5 mm



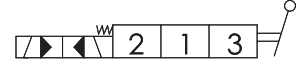
Spool Positioners

Sürgü Kontrolleri

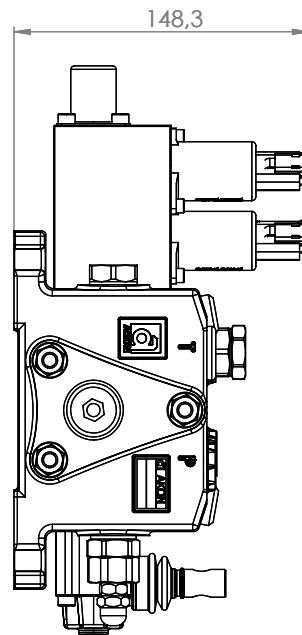
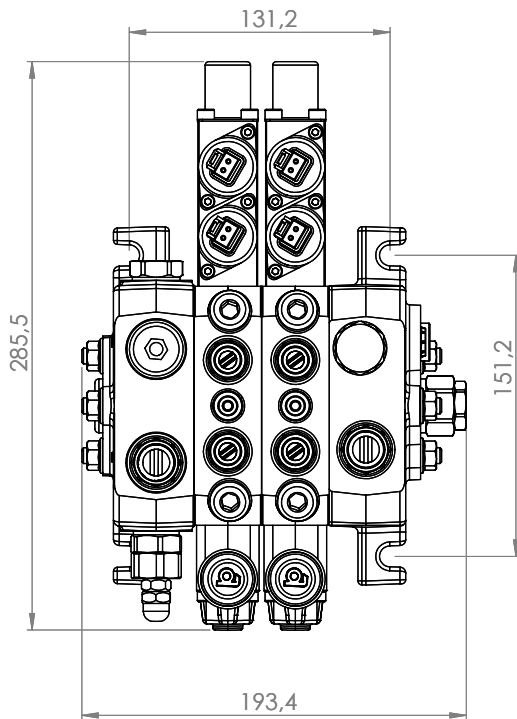
SC17

On-Off Electro-Hydraulic Control

On-Off Elektro-Hidrolik Kontrol



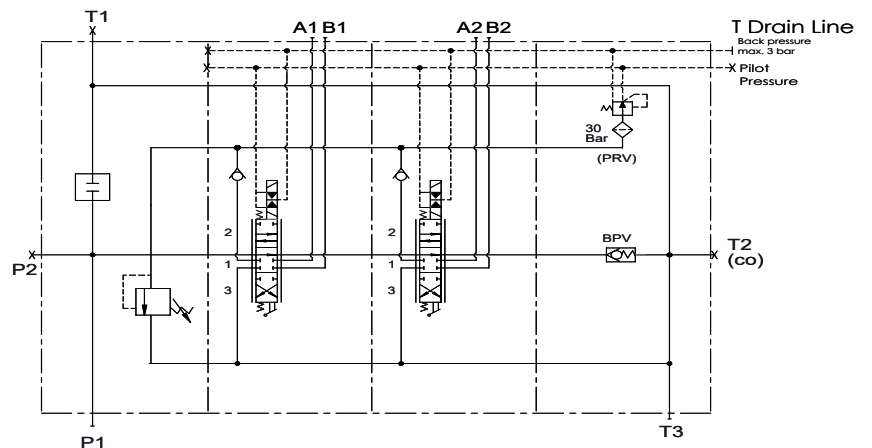
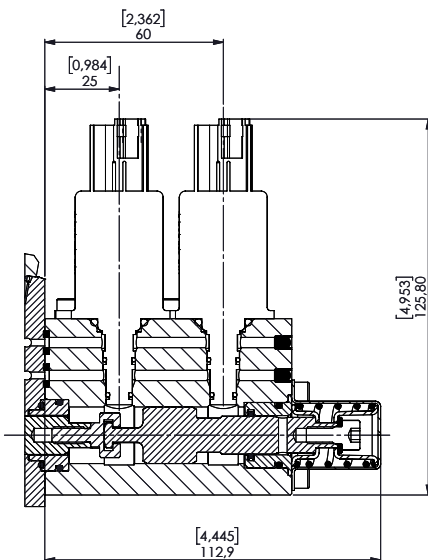
Stroke : ±5 mm



Voltage	Code / Kod
12VDC	SC172
24VDC	SC174

Standard Connection and Hydraulic Circuit

Standart Bağlantı ve Hidrolik Devre



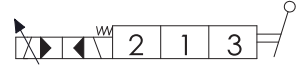
Spool Positioners

Sürgü Kontrolleri

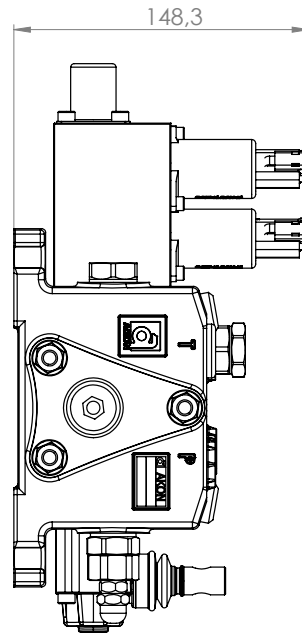
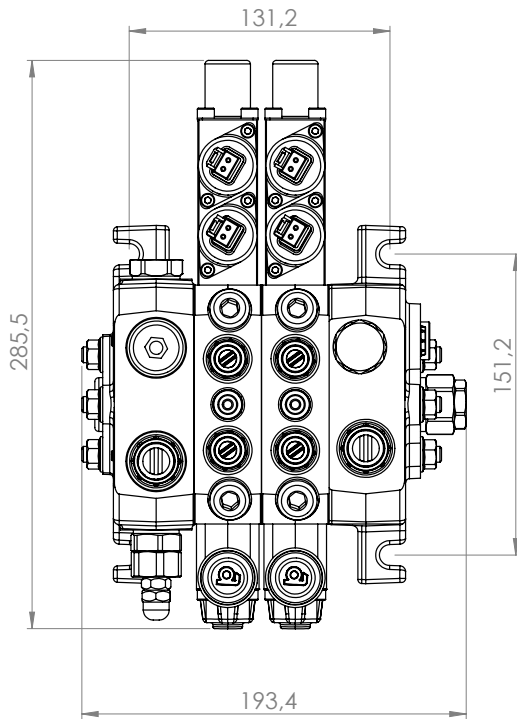
SC34

Proportional Electro-Hydraulic Control Pneumatic Control

Oransal Elektro-Hidrolik Kontrol



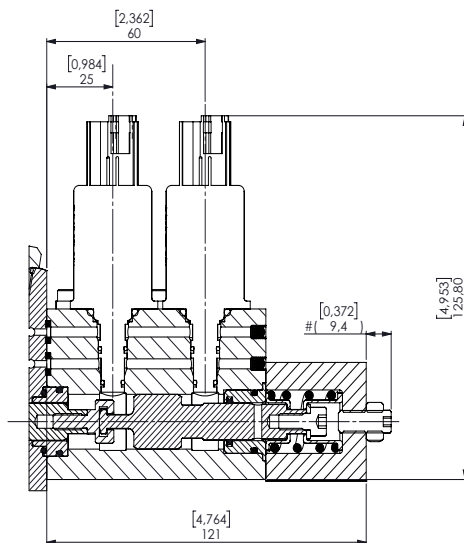
Stroke : ±5 mm



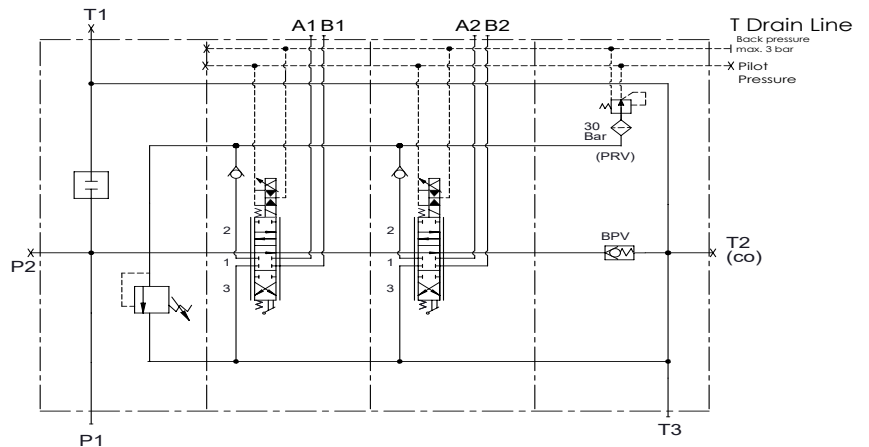
Voltage	Code / Kod
12VDC	SC342
24VDC	SC344

Standard Connection and Hydraulic Circuit

Standart Bağlantı ve Hidrolik Devre



E (1 : 1)



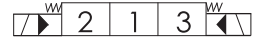
Spool Positioners

Sürgü Kontrolleri

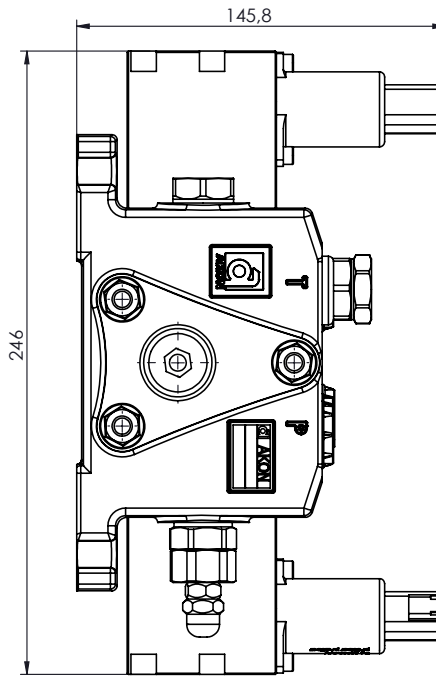
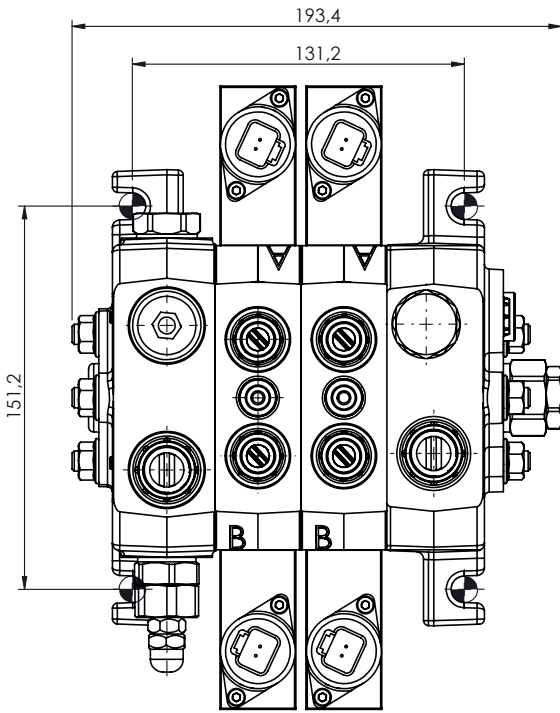
SC38

On/Off Electro-Hydraulic Control

On/Off Elektro-Hidrolik Kontrol



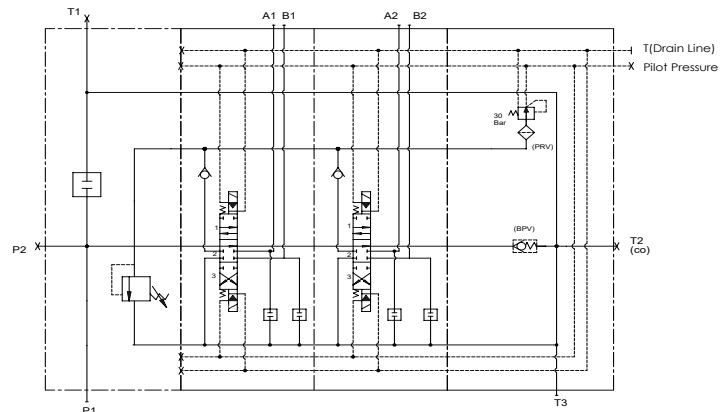
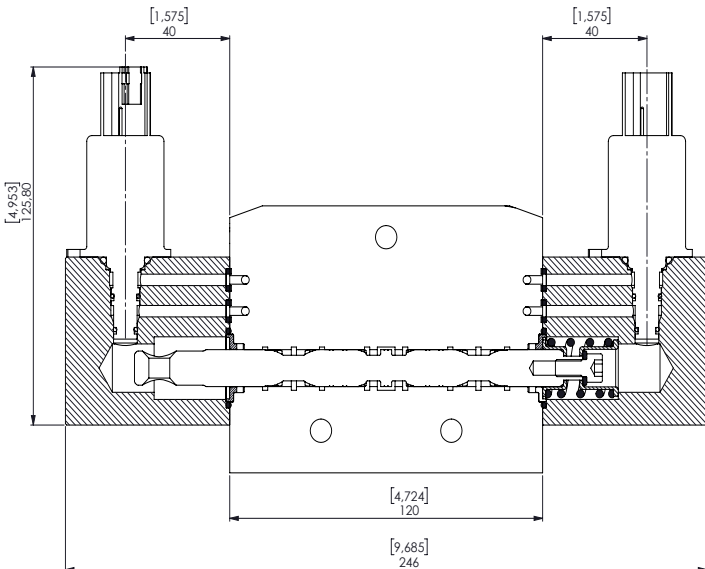
Stroke : ±5 mm



Voltage	Code / Kod
12VDC	SC382
24VDC	SC384

Standard Connection and Hydraulic Circuit

Standart Bağlantı ve Hidrolik Devre



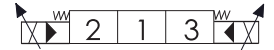
Spool Positioners

Sürgü Kontrolleri

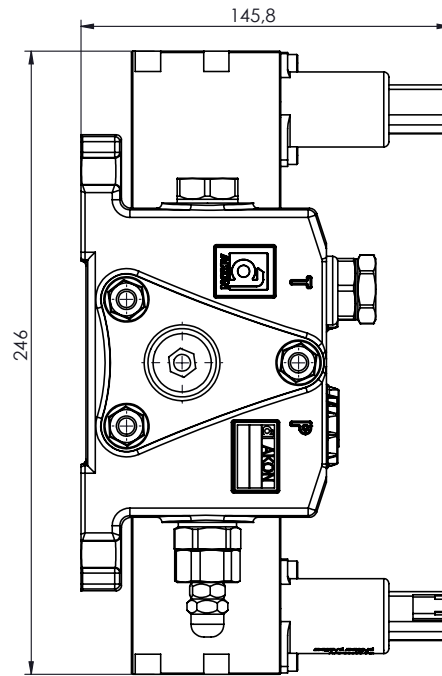
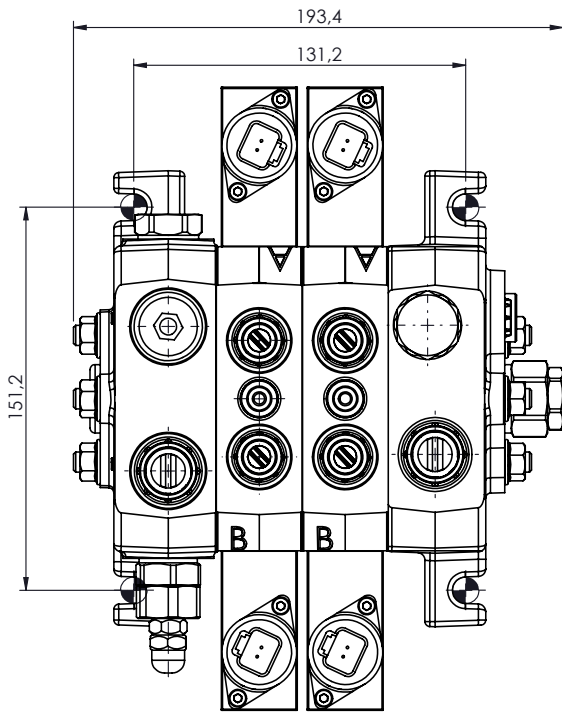
SC43

Proportional Electro-Hydraulic Control

Oransal Elektro-Hidrolik Kontrol



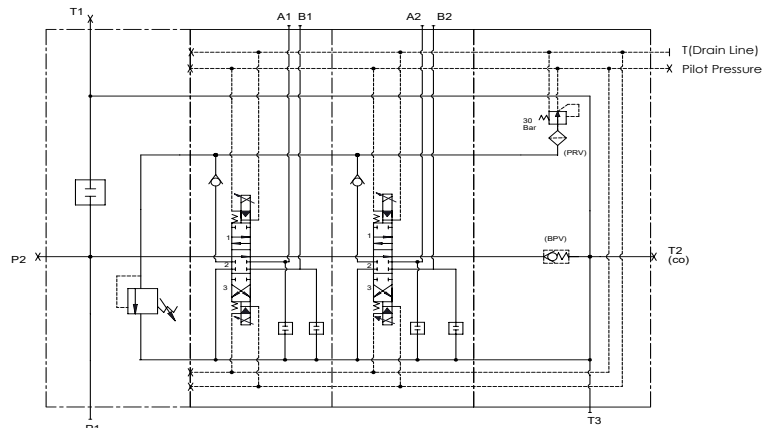
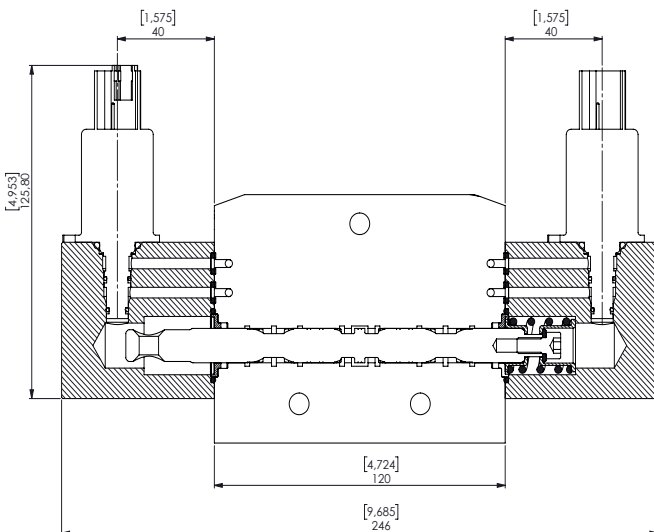
Stroke : ±5 mm



Voltage	Code / Kod
12VDC	SC432
24VDC	SC434

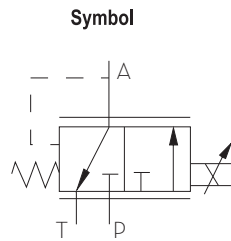
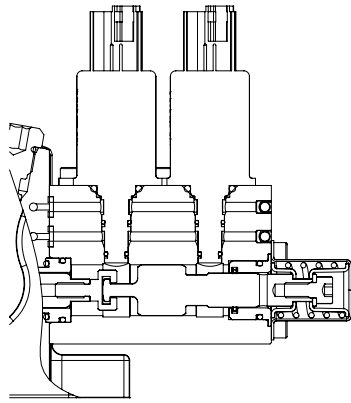
Standard Connection and Hydraulic Circuit

Standart Bağlantı ve Hidrolik Devre

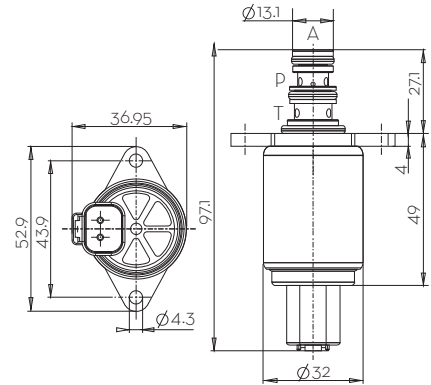


Coil Characteristics

Bobin Özellikleri



Dimensions with Deutsch Connector
(All dimensions in mm)



Hydraulic Data

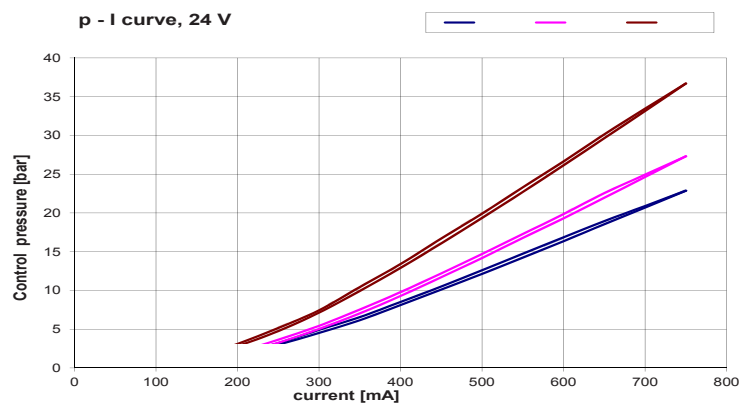
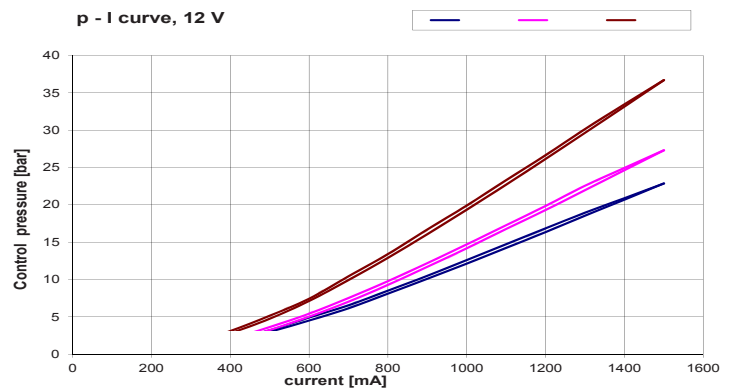
Max Pressure (P, T)	pP = 50 bar, pT = 30 bar
Hysteresis (w/ PWM)	< 0.4 bar (pA=20) < 0.5 bar (pA=25) < 0.7 bar (pA=32)
Filter Screen	125 µm
Contamination Level	Min Filtration: 20/18/15 According to ISO 4406
Fluid	Mineral Oil According to DIN 51524
Temperature Range Fluid	-40 to +105°C

Electrical Data

Norm. Voltage	12 V	24 V
Current	1500 mA	750 mA
Resistance	5.3 Ω ± 5%	21.2 Ω ± 5%
Type of Control	Current Control PWM 100 Hz Recommended	
Connector	AMP Junior Timer Deutsch Connector DT04-2P	
Protection Class	Up to IP6K6 / IPX9K	

Current vs. Pressure

Less than 2% Hysterisis



Spool Options

Sürgü Tipleri

S51 / IL- 005 (180) - B01 / A SC4 **ST11** V13 K3 / B

Spool Options
Sürgü Tipleri

Spool Positions Sürgü Pozisyonları

1st Position
1. Pozisyon
Spool Neutral Position
Nötr



2nd Position
2. Pozisyon
Spool In Position
Mil İçerde



B -> T
P -> A

3rd Position
3. Pozisyon
Spool Out Position
Mil Dışarda



A -> T
P -> B

4th Position
4. Pozisyon
4th Pos. Spool Out
4. Pozisyon Mil Dışarda

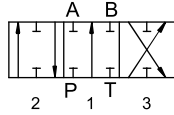


4th Pos. Spool In
4. Pozisyon Mil İçerde



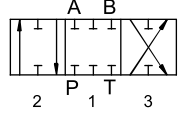
ST1

3 Position, Double Acting
3 Pozisyon, Çift Etkili



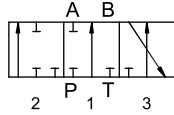
ST4

3 Position, Closed Center
3 Pozisyon, Kapalı Merkez



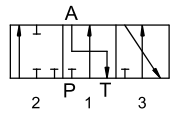
ST2

3 Position, A Port Single Acting
3 Pozisyon, A Port Tek Etkili



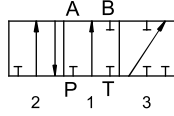
ST5

3 Position, A Port Single Acting and to Tank
3 Pozisyon, A Port Tek Etkili ve Tanka Açık



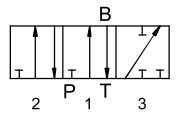
ST3

3 Position, B Port Single Acting
3 Pozisyon, B Port Tek Etkili



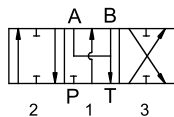
ST6

3 Position, B Port Single Acting and to Tank
3 Pozisyon, B Port Tek Etkili ve Tanka Açık



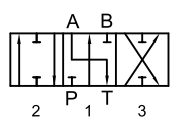
ST11

3 Position, Double Acting, A/B to Tank
3 Pozisyon, Çift Etkili A ve B Tanka Açık



ST7

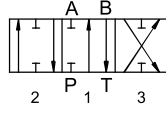
3 Position, Double Acting A to Tank
3 Pozisyon, Çift Etkili ve A Tanka Açık



ST8

3 Position,
Double Acting B to Tank

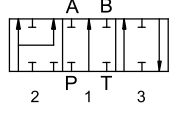
3 Pozisyon,
Çift Etkili ve B Tanka Açık



S12A

3 Position, Double Acting With
Regenerative in 3rd Position
(2nd Position Spool In)

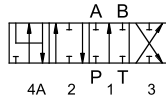
3 Pozisyon, Çift Etkili
3. Pozisyonda Rejeneratif
(Mil İçerde 2. Pozisyon)



ST9A

4 Position, Double Acting with
Float in 4th Position
(4th Position Spool In)

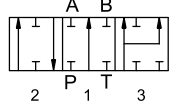
4 Pozisyon, 4. Pozisyonda Float
(Mil İçerde 4. Pozisyon)



ST12B

3 Position, Double Acting With
Regenerative in 2nd Position
(3rd Position Spool Out)

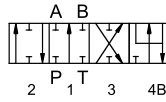
3 Pozisyon, Çift Etkili
2. Pozisyonda Rejeneratif
(Mil Dışarda 3. Pozisyon)



ST9B

4 Position, Double Acting with
Float in 4th Position
(4th Position Spool Out)

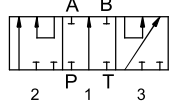
4 Pozisyon, 4. Pozisyonda Float
(Mil Dışarda 4. Pozisyon)



ST19

3 Position, Series Spool

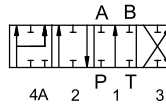
3 Pozisyon, Seri Sürgü



ST10A

4 Position, Double Acting with
Regenerative in 4th Position
(4th Position Spool In)

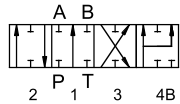
4 Pozisyon,
4. Pozisyonda Rejeneratif
(Mil İçerde 4. Pozisyon)



ST10B

4 Position, Double Acting With
Regenerative in 4th Position
(4th Position Spool Out)

4 Pozisyon,
4. Pozisyonda Rejeneratif
(Mil Dışarda 4. Pozisyon)



Auxiliary Valves

Yardımcı Valfler

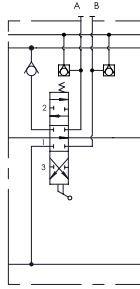
S51 / IL- 005 (180) - B01 / A SC4 ST11 **V13** K3 / B

Auxiliary Valves
Yardımcı Valfler

V4

Anticavitation valves on A & B ports

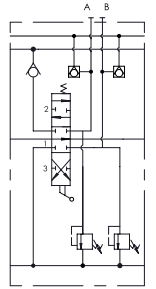
A & B portlarında antikavitasyon valfi



V7

Antishock & anticavitation valves on A & B ports

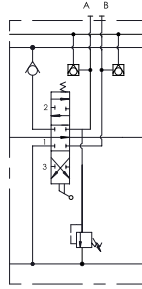
A & B portlarında antişok & antikavitasyon valfi



V12

Antishock & anticavitation valve on port A & anticavitation valve on port B

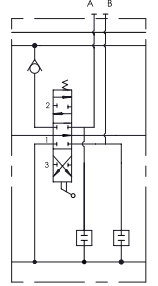
A portunda antişok & antikavitasyon valfi
& B portunda antikavitasyon valfi



V13

Port relief cavity plug on A & B ports

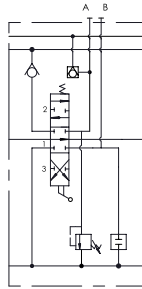
A & B portlarında kör tapa



V19

Antishock & anticavitation valve on port A & port relief cavity plug on port B

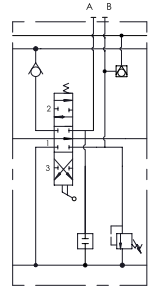
A portunda antişok & antikavitasyon valfi
& B portunda kör tapa



V20

Port relief cavity plug on port A & antishock & anticavitation valve on port B

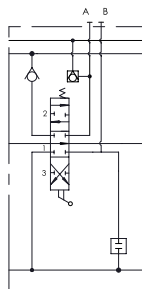
A portunda kör tapa
& B portunda antişok & antikavitasyon valfi



V21

Anticavitation valve on port A & port relief cavity plug on port B

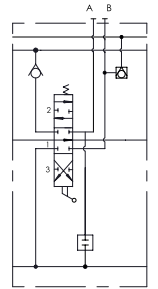
A portunda antikavitasyon valfi
& B portunda kör tapa



V22

Port relief cavity plug on port A & anticavitation valve on port B

A portunda kör tapa
& B portunda antikavitasyon valfi



Lever Types

Sap Tipleri

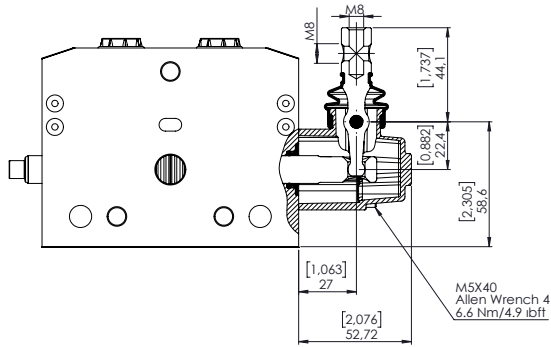
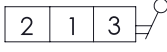
S51 / IL- 005 (180) - B01 / A SC4 ST11 V13 **K3** / B

Lever Types
Sap Tipleri

NO
CODE

Standard Lever Kit

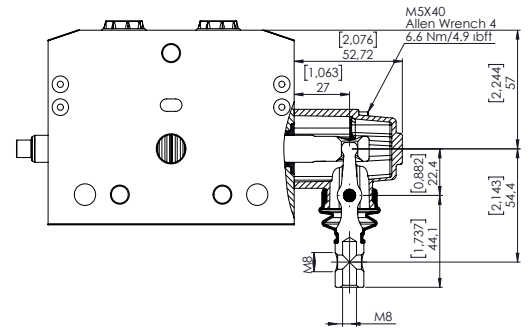
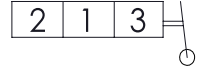
Standart Sap Kapağı



K1

Reverse Lever Kit

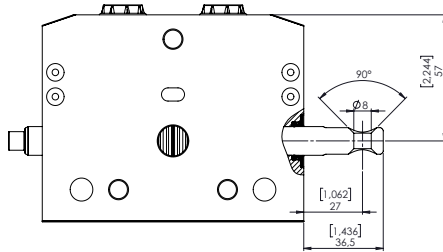
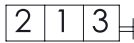
Ters montaj Sap Kapağı



K2

No Lever

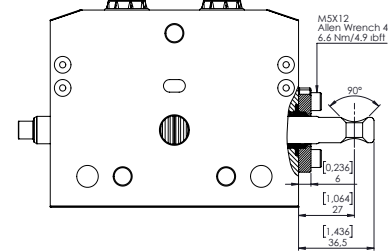
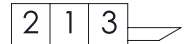
Sap Kapaksız



K3

Dust Proof Plate Kit

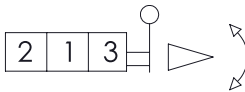
Toz Kapaklı



K4

Safety Lever

Güvenlik Kolu

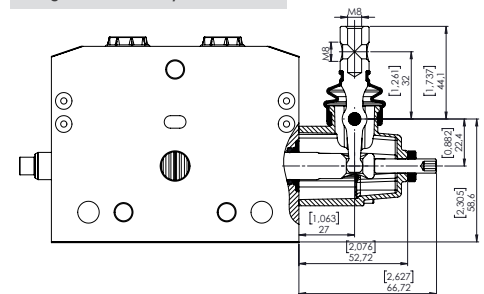
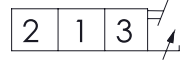


PLEASE
CONTACT TO
SALES
DEPARTMENT

K5

Lever Cap with Spool Limiter

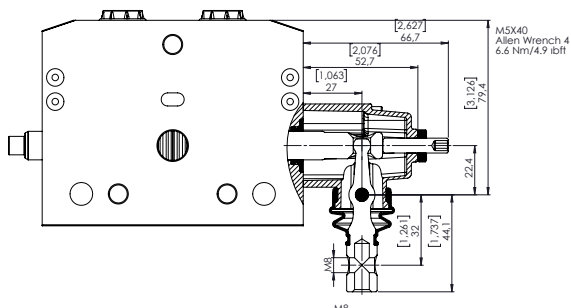
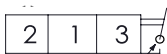
Sürgü Strok Kısıtlayıcı



K6

Rev. Lever Cap with Spool Limiter

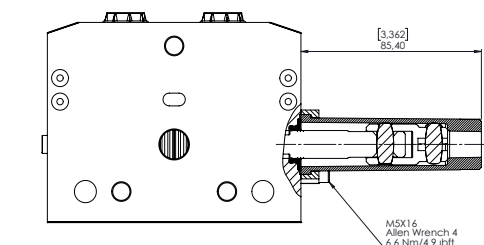
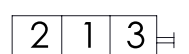
Ters Montaj Sürgü Strok Kısıtlayıcı



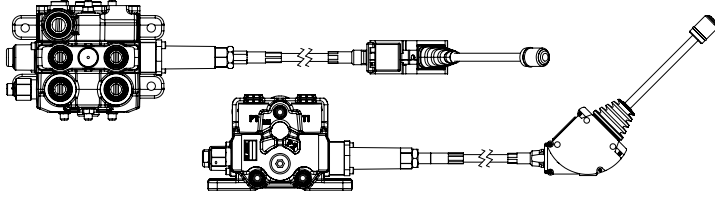
KT

Cable Connection Kit

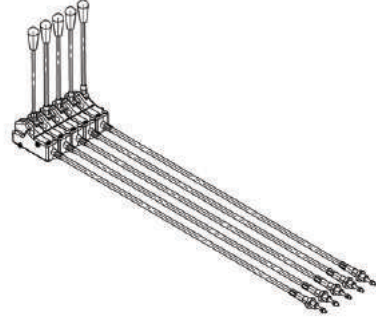
Kablo Bağlantı Kiti



Lever Cable Remote Control *Halat Kontrol*



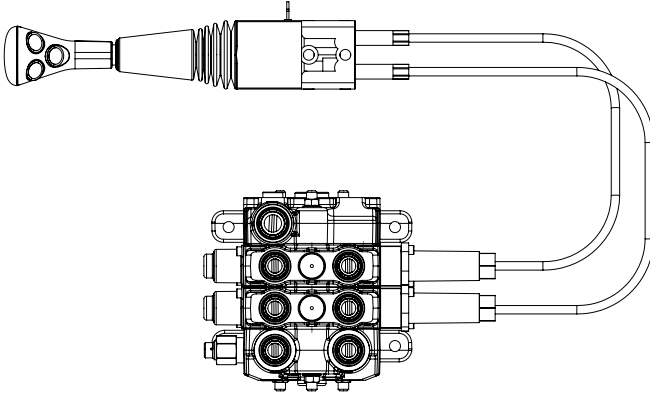
Cable remote control for Group of Levers *Halat Kontrol Grubu*



Lever cable remote control and cable remote control for group of levers are a modular system offering unlimited number of levers together through screws, also with many different configurations and cables lengths. Assembled on the valve only on request and extra charge. Please contact our sales department for details.

Halat kontrol ve halat kontrol grubu için farklı uzunlukları mevcuttur. Halat Kontrol grubu ise talebe göre çeşitli dilim sayıları için ve çeşitli uzunluklarda temin edilir. Kontrol grubu birbirine saplaamlarla bağlanmaktadır. Lütfen detaylı bilgi için satış departmanımızla bağlantıya geçiniz.

Remote Joystick Control *Joystik Halat Kontrol*



Remote joystick control is available with several options. Please indicate the cable length demanded and contact our sales department for further demands.

Joystik halat kontrol farklı çeşit ve uzunluklarda mevcuttur. Lütfen satış departmanımızla bağlantıya geçiniz.

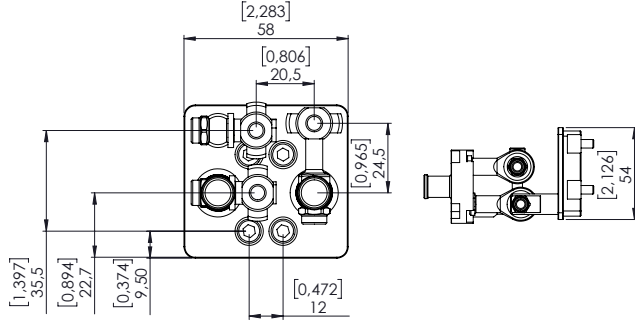
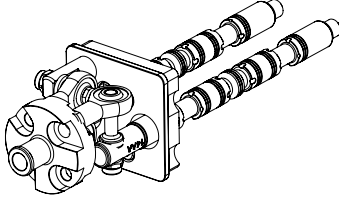
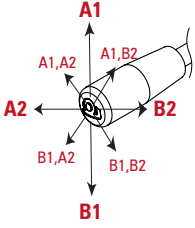
Joystick Control

Joystik Kontrol

K7

Manual Joystick with pivot on top left

Manuel Joystick Kontrol (Pivot Sol Üst)

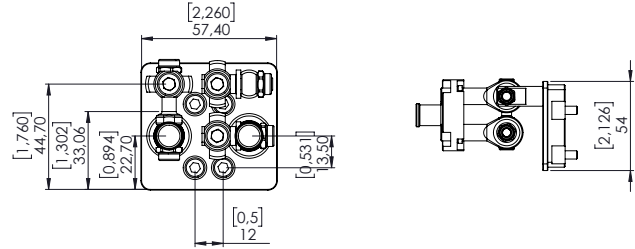
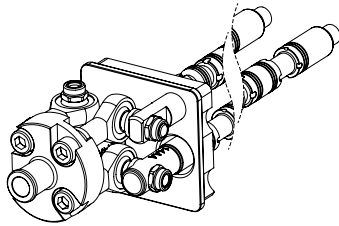
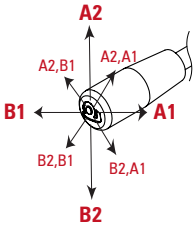


K7 is standard configuration unless otherwise specified.
Aksi belirtilmedikçe K7 standart konfigürasyondur.

K7B

Manual Joystick with pivot on top right

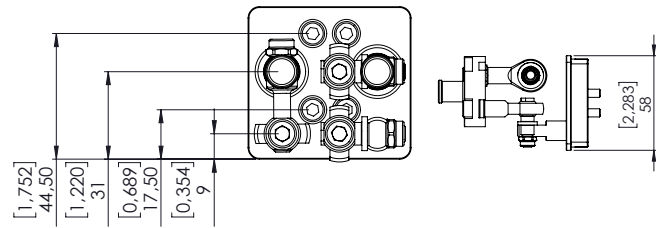
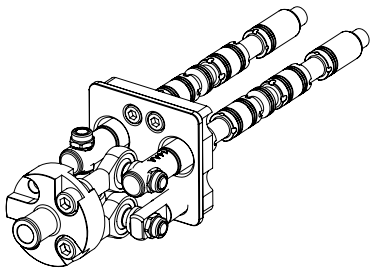
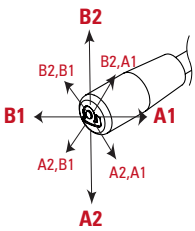
Manuel Joystick Kontrol (Pivot Sağ Üst)



K7C

Manual Joystick with pivot on bottom right

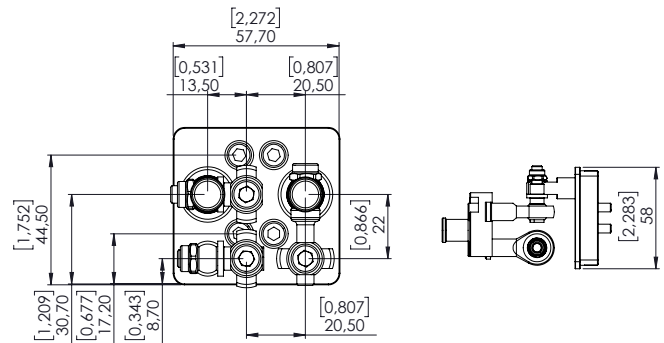
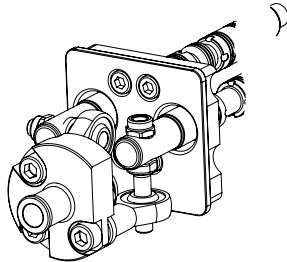
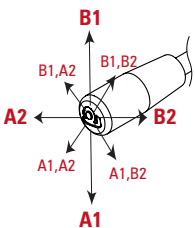
Manuel Joystick Kontrol (Pivot Sağ Alt)



K7D

Manual Joystick with pivot on bottom left

Manuel Joystick Kontrol (Pivot Sol Alt)



Outlet Options

Tank (T) Hattı Opsiyonları

S51 / IL- 005 (180) - B01 / A SC4 ST11 V13 K3 / **B - H**

Outlet Options
Tank (T) Hattı Opsiyonları

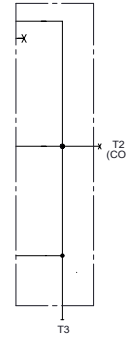
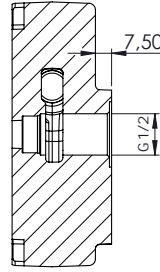
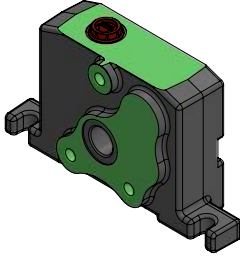
Standard Open Center Upper Outlet (T3 open, T2 plugged)

Standart Açık Merkez (T3 açık, T2 kör)

Demanded port thread of the outlet section need to be coded here.

Tank hattı için talep edilen port ölçüsü burada kodlanmalıdır.

Ex; S51/IL-005(180)-B01/ASC1ST1KT/B



Port Thread

Order Code

G 1/2"

B

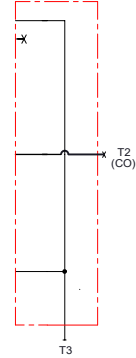
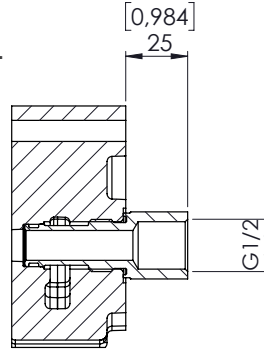
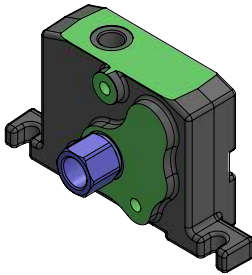
Please contact our sales department for other outlet options.
Özel talepleriniz için lütfen Satış Departmanımızla bağlantıya geçin.

Outlet with Carry-Over

Carry-Over

When Carry-Over is used for series connection with another valve, T3 or T1 of the first valve must be connected to the tank.

Carry-over kullanıldığında, 1.valfin tank hattı (T3 veya T1) mutlaka tanka bağlanmalıdır.



Port Thread

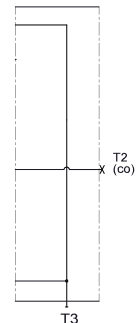
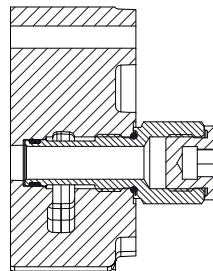
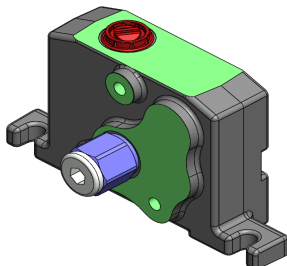
Order Code

G 1/2"

B-H

Outlet with Closed Center Plug

Kapalı Merkez



Port Thread

Order Code

G 1/2"

B-K



www.akon.com.tr

export@akon.com.tr
sales@akon.com.tr