

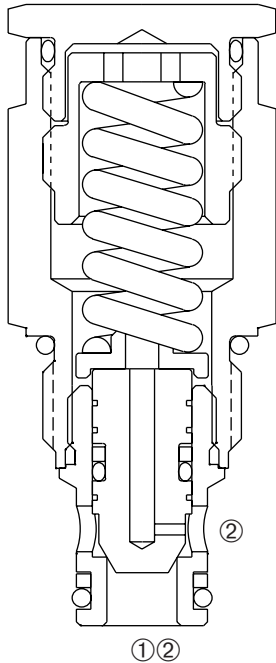
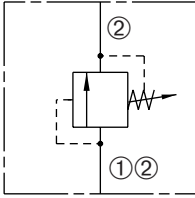
DRV-080-* -H

Tamper-Resistant,
Direct-Acting Relief Valve



SERIES 8

USASI / ISO



DESCRIPTION

An adjustable, direct-acting poppet cartridge valve designed to limit pressure in hydraulic circuits.

OPERATION

The DRV-080-* -H prevents flow from ① to ② until the set crack pressure at ① is achieved. The poppet then unseats allowing flow from ① to ② protecting the circuit from over pressurization.

FEATURES and BENEFITS

- Quiet operation.
- Rapid response to pressure surges.
- Hardened poppet and seat for long life.
- Hidden adjustment (tamper resistant).
- Industry common cavity.
- Compact size.

SPECIFICATIONS

Operating Pressure: 3000 PSI (207 Bar)

Flow: See PRESSURE DROP VS. FLOW graph.

Internal Leakage: 20 drops/min. max. at reseal.

Crack Pressure Defined: Determined at .25 gpm (0.9 L/min.)

Reseat Pressure: Nominal 80% of crack pressure.

Spring Ranges: 50 to 3000 PSI (3 to 207 Bar)

Preset: 1500 PSI (103 Bar)

Temperature: -30°F to +250°F (-35°C to +120°C).

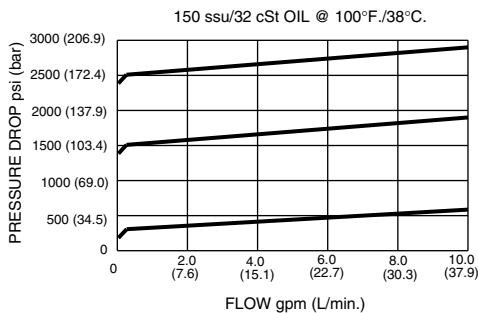
Recommended Filtration: ISO 20/18/14

Fluids: Mineral-based fluids. For other fluid compatibility, consult factory.

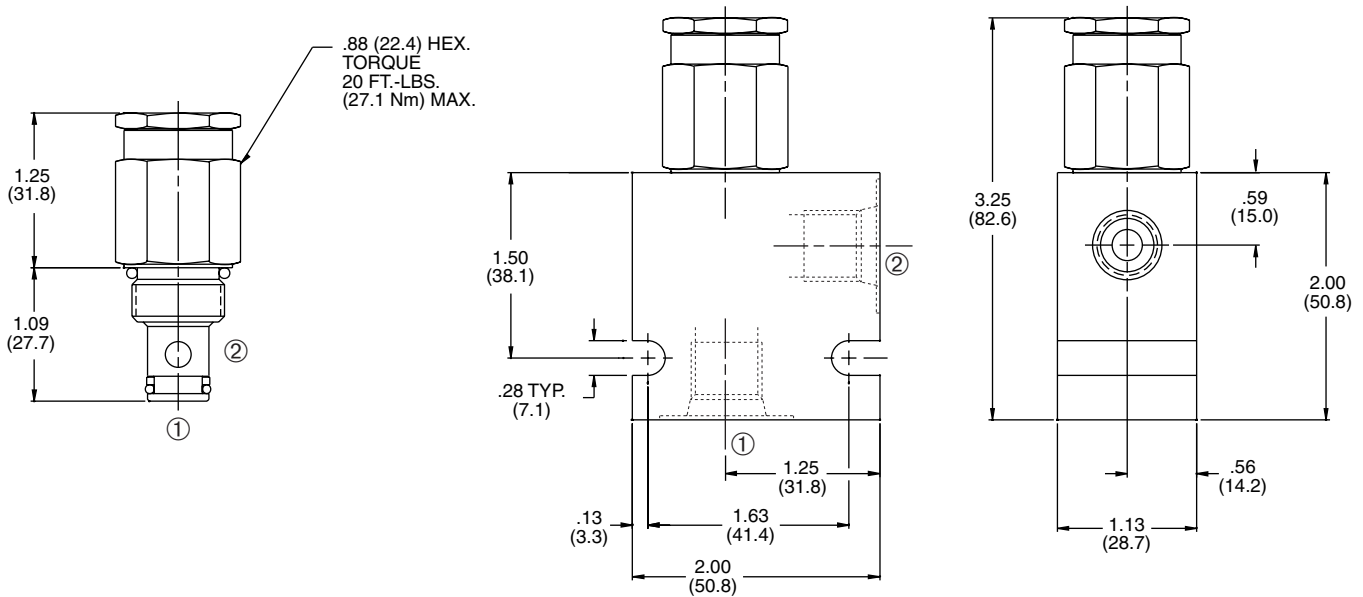
Cavity/Cavity Tool: 080-2, see page 11.08.2

Body Material: Anodized 6061T6 aluminum alloy rated at 3000 PSI (207 Bar).

PRESSURE DROP VS. FLOW



INSTALLATION DIMENSIONS



() Parentheses = Millimeters

HOW TO ORDER

